



Rivers East
ADVANCED MANUFACTURING ACADEMY

EMPOWER
THE
PROFESSION
THAT
SHAPES OUR
REGION'S
FUTURE

"Every aspect of school change depends on highly skilled teachers for its success."

Linda Darling-Hammond
Learning Policy Institute

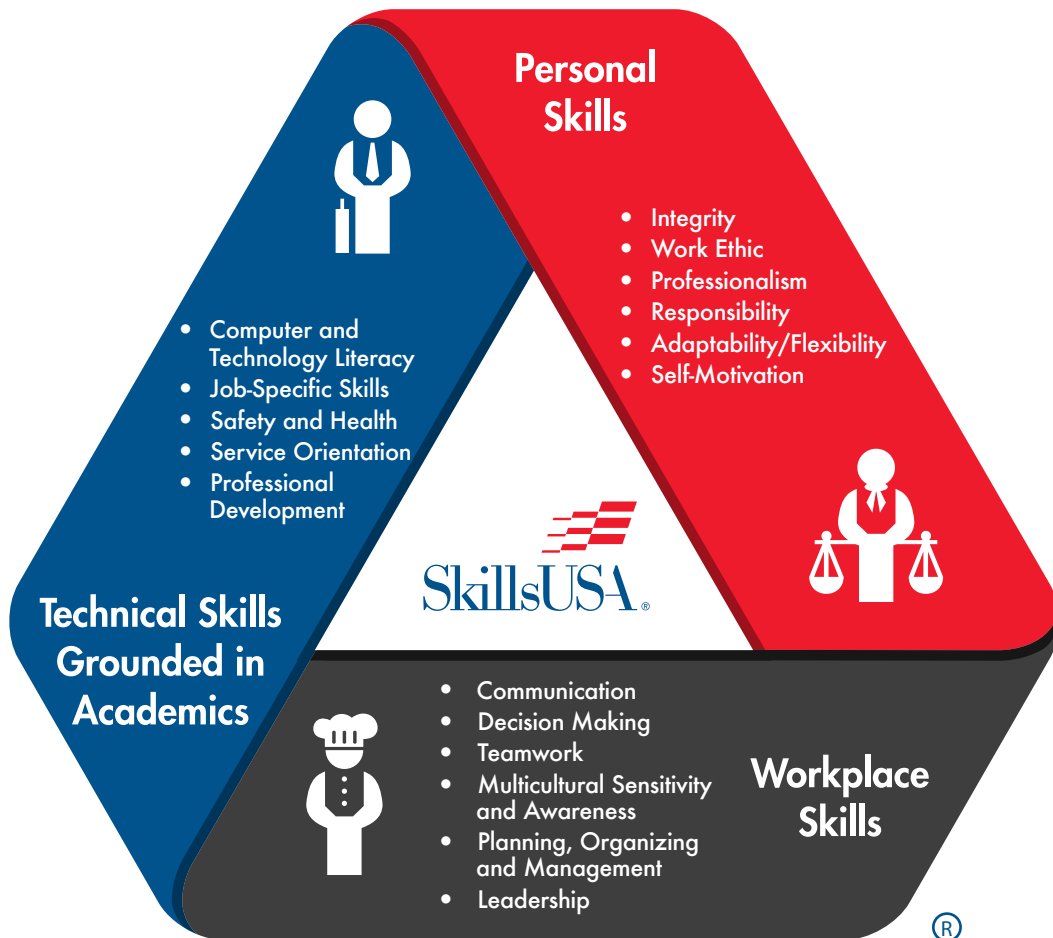
EMPLOYABILITY SKILLS FRAMEWORK

TEACHERS, STUDENTS, FACULTY & EMPLOYERS

- HS Teachers - Experiential Rounds
- CC Student Ambassadors - Co-teach
- CC Faculty - Embed Employability Skills
- Regional Employers - Shop Talk & Live Streams

PROFESSIONAL LEARNING SERIES

- CC 1: Framework Introduction
- CC 2: Personal Skills Focus
- CC 3: Workplace Skills Focus
- CC 4: Technical Skills Focus
- On-Site Employer Externship
- Classroom Integration of Branded Activity





INDUSTRY ENAGEMENT TOOLKITS

Using Career Pathways, Teachers and Faculty work directly with local employers.

Made in BEAUFORT COUNTY NC

Made in Beaufort County NC
1502 N. Market St., Suite A
Washington, NC 27889
Phone: (252) 974.1821

PLASTICS and INJECTION MOLDING

- Freight, Stock and Material Movers \$10.96
- Assemblers and Fabricators \$11.73
- Office and Administrative Support Workers* \$13.31
- Cutting, Punching, & Press Machine Setters, Operators, and Tenders \$14.19
- Inspectors, Testers, Sorters, Samplers, and Weighers \$14.90
- Computer-Controlled Machine Tool Operators* \$16.05
- Bookkeeping, Accounting and Auditing Clerks* \$16.74
- Industrial Engineering Technician* \$23.42
- Industrial Machinery Mechanics* \$24.29
- Engineers* \$24.20

*These careers may require post-secondary education

What are PLASTICS and INJECTION MOLDING?
Injection molding is a manufacturing process for producing parts by injecting molten material into a mould, or mold. Injection moulding can be performed with a host of materials mainly including metals (for which the process is called die-casting), glasses, elastomers, confections, and most commonly thermoplastic and thermosetting polymers. Material for the part is fed into a heated barrel, mixed (using a helical shaped screw), and injected into a mould cavity, where it cools and hardens to the configuration of the cavity. For more information, visit www.madeinboco.com

ALL ROADS LEAD TO SUCCESS!

The Pathway to Your Future
Getting started is easy and you can get started at ANY stage in life. Opportunities to grow and thrive in a career in Beaufort County are for an entire lifetime.

INTERSTATE BEAUFORT COUNTY SCHOOLS

ON RAMP 1
BEAUFORT COUNTY COMMUNITY COLLEGE
Boat Building Diploma
Industrial Technology
Mechanical Design
Mechanical Engineering
Welding Technology

ON RAMP 2
ECU
Industrial Technology (BS)
Industrial Engineering Technology (BS)
Engineering (BS)
Industrial Distribution & Logistics (BS)
Construction Management (BA, MS)
Mechanical Design

WOOD WORKING
idX BEAR CREEK WOODWORKS
INTERMARKET TECHNOLOGY
RECYCLINGBIN.COM

BOAT BUILDING
ICONIC marine group CALDWELL MARINE DESIGNS
EGRET BOATS
PACIFIC SEACRAFT
PAIR CUSTOMS
PAMLICO YACHTWORKS
RADCLIFFE BOATWORKS
HYSUCAT

PLASTICS
PAS SESAME TECHNOLOGIES
ITW MEDICAL

WELDING
camfil AAF Flanders
CARVER MACHINE WORKS
COOL TOPS
GREGORY POOLE EQUIPMENT

Accounting I & Accounting II
Principles of Business & Finance
Drafting I and Drafting II
Boat Building I & II
Carpentry I, II, & III
Core & Sustainable Construction
Welding Tech I, II, III - w/ AWS certificate
Internships
Electrical Trades I & II
Agricultural Mechanics I & II
Workkeys (Career Readiness Certificate)
Excel 2016 & Excel Expert 2016
Master Office Specialist
Autocad
Revit
NCCER Core
NCCER Construction I & II
NCCER Electrical Trades I & II

NCCER Welding Level I & II
OSHA 10 safety
Preapprenticeships

OTHER SUPPORTING ORGANIZATIONS
Rivers East WORKFORCE DEVELOPMENT BOARD
Washington BEAUFORT COUNTY CHAMBER OF COMMERCE
Beaufort County Schools
NC Career Pathways

For more information:
MadeInBeaufortCounty.com
facebook.com/MadeInBeaufortCounty
youtube.com/MadeInBeaufortCounty
instagram.com/MadeInBeaufortCounty



Rivers East

ADVANCED MANUFACTURING ACADEMY

REIMAGINING TEACHER EXTERNSHIPS

A professional learning program designed to develop teacher expertise in employability skills and regional industry engagement