

Health Care

Local Career Pathway Implementation
Certification Application – Pitt County
Northeast NC Career Pathways



1.0 NC Northeast Health Care Pathway Local Partnership Team Members

List the team members that participated in the development of the health care pathway(s) implementation plan. Team members may be attached with representations clearly delineated. At a minimum, the team must consist of the following –

A. _____ at least two community college representatives who are stakeholders in the implementation of the health career pathway(s)

Name and position at the college:

1. Donna Neal, Dean - Health Sciences
2. Lori Preast, Assistant VP, Academic Affairs
3. Rachel Bridgers, Career Outreach Specialist
4. Sidette Brown, Director – Healthcare Programs, Continuing Education
5. Laurie Weston, Director – Transitional Studies

List additional community college team members:

B. _____ at least one LEA representative from each of the LEAs in the local partnership

Name, LEA and position:

1. Beth Ann Trueblood, CTE Director – Pitt County Schools

List additional LEA team members: Simone Pate, Work-Based Learning Coordinator, Jennifer Johnson, Health Sciences Academy - Pitt County

C. _____ at least one representative from the local workforce development board or NCWorks Career Center

Name and position:

Wayne Rollins, Region Q Workforce Development Board, Chanda Speller, NCWorks Pathway Champion

List additional WDB team members:

D. _____ at least one health care employer

Name, health care provider, position:

- | | |
|--|---|
| 1. Sarah Everette, Director of Health Services, Cypress Glen | 6. Mandy Tigert, HR, Physician's East |
| 2. Caryl Holoman, Clinical OPS, ECU Physicians | 7. Lisa Lassiter, Administrative Health Services, Vidant Health |
| 3. David Edwards, Physical Therapist, Kinetic PT & Wellness | 8. Sherry Stone, Ed. Specialist, Vidant Medical Center |
| 4. Jill Berman, Assistant Clinic Manager, Massage Envy | 9. Tywanna Purkett, Ed. Specialist, Vidant Medical Center |
| 5. P. Scott Cole, Director of HR, Physician's East | |

List additional health care employer team members:

E. Additional Team Members (optional):

2. Modified Local Pathway(s) - Attach modified local pathway(s) that include at a minimum the following elements of the regional health care pathway(s). Elements must be specific and reflect the involvement of all entities. [Please see attached](#)

_____ Sequence of courses and learning experiences that begin in high school and continue through post-secondary that result in earned stackable certifications, diplomas and degrees.

_____ work-based learning experiences

_____ sequenced career counseling experiences

_____ Career and College Promise Courses

_____ stackable credentials

_____ graphic and/or narrative that explains pathway entry options for adult learners

3. Collaboration - Date(s) of meetings with all partnering entities present to gather input and develop/finalize local pathways, and implementation plans (minimum of one face-to-face meeting required). Documentation of collaboration, i.e. agenda(s), sign-in sheets is required.

Provide meeting documentation below (expand this section to include additional meetings). Documentation may be attached. Team member representations must be clearly defined.

Meeting Date: [September 20, 2017](#) Location: [Pitt Community College](#)

List Names of Team Members Present

Community College – [Please see sign-in sheet](#)

LEAs – [Please see sign-in sheet](#)

Workforce Development Bds. – [Please see sign-in sheet](#)

Health Care Employers – [Please see sign-in sheet](#)

Others (list agency/position) -- [Please see sign-in sheet](#)

4. Work-based Learning - On the regionally developed attached document “**Continuum of Key Work-Based Learning Components**” recruit and list local employers who will commit to one or more of the work-based experiences listed. **The minimum requirement for this criteria is at least five employers within the local partnership will commit to provide work-based learning opportunities in one or more of the components designated with an “*”.** Each LEA in the partnership will be responsible for recruiting at least one employer in meeting the required five employer minimum. You may use the attached continuum (or a chart created by the team) to list employer names, contact information, and approximate number of students affected by experience.

[Please see attached](#)

_____ self-check indicates minimum criteria has been met

5.1 Career Awareness – Using the regionally developed “**Comprehensive Career Guidance and Counseling Planning Tools (Grades 6 – Adult)**” updated November 2015 as a guide, and the career counseling planning forms attached, design a local implementation plan for a balanced comprehensive middle school through adult career guidance system. Please specify grade levels, classes, or other means of delivery to explain the comprehensiveness of the plan. [Please see attached](#)

_____ self-check indicates minimum criteria has been met

5.2 Certified Pathway Career Awareness – Each of the local educational and training partners will document at least one health care career awareness activity that was implemented over the past twelve months. [Please see attached](#)

_____ LEA and/or school, describe health care career awareness activity or activities –

_____ Community College, describe health care career awareness activity or activities –

_____ WDB, describe health care career activity or activities-

6. Adult Learner Focus – (a WDB led implementation initiative focused on unemployed, underemployed and incumbent workers) [Please see attached](#)

check when each of the following indicators has been met

_____ all of the NCWorks Center counselors and advisors have been trained in the Northeast regional approach to career pathways

_____ targeted marketing materials that feature local health care careers and educational opportunities have been developed and are being used in the counseling/advising process (attach samples of the marketing materials)

_____ a pathway has been developed and published in collaboration with the community college partners specifically for adult learners that clearly lays out pathway entry options and directions for 1) enrolling in NCWorks Online, 2) how to contact the local NCWorks Center for additional services and 3) setting up a CFNC account.

7. Evaluation – The LEAs, Community College and Workforce Development Board agree to track and turn in the health care metrics data sets (first collected in 2013-14) as prescribed by the regional pathway partnership

Check indicates the agreement to provide the prescribed data

_____ LEAs

_____ Community College

_____ WDB

Criteria 2.0

**NC Northeast Health Care Pathway
Modified Local Pathways – Pitt County**



PITT COMMUNITY COLLEGE Career Pathway for Nursing

CLUSTER: HEALTH SCIENCE

Effective: September 20, 2017



Program Description: The Associate Degree Nursing curriculum provides knowledge, skills, and strategies to integrate safety and quality into nursing care, to practice in a dynamic environment, and to meet individual needs which impact health, quality of life, and achievement of potential. Course work includes and builds upon the domains of healthcare, nursing practice, and the holistic individual. Content emphasizes the nurse as a member of the interdisciplinary team providing safe, individualized care while employing evidence-based practice, quality improvement, and informatics. Graduates of this program are eligible to apply to take the National Council Licensure Examination (NCLEX-RN). Employment opportunities are vast within the global health care system and may include positions within acute, chronic, extended, industrial, and community health care facilities.

The proposed curriculum below will prepare high school students to apply for admission to the Associate Degree Nursing Program. High school students must meet eligibility criteria to be a Career and College Promise student in order to take PCC courses. For more information on how to apply to PCC as a CCP student, contact the CCP office at 252-493-7411.

Core Requirement Major Concentration (4 credits) Mini Concentration (2 credits) Other Electives (5 credits)

HIGH SCHOOL GRADE	Students may take Honors/AP level courses where available.								WORK-BASED LEARNING ^d	CREDENTIALS/CERTIFICATIONS	CAREER EXPLORATION
9	English I	Math I	Earth/Environmental	World History	Health/PE	Arts Education	Mini Conc Elective	Biomedical Technology I			Career Assessment, Class Presentations, Health Fair, Career Fairs,
10	English II	Math II	Biology	Civics & Economics	MS Word & PPT	Health Science I	Health Science II	Elective	Job Shadowing (25+ hours)	BLS Cert, MS Word Cert, & MS PPT Cert	Career Expo, Gear Up, Visions Tour, Destination Health Careers (camp)
11	English III	Math III	Chemistry*	American History I	American History II	ENG 111* (PCC)	PSY 150* (PCC)	ACA 111* & HSC 110* (PCC)			
12	ENG 112* (PCC)	Math IV	BIO 168* (PCC)	BIO 169* (PCC)	HUM 115* (PCC)	PSY 241* (PCC)	Nursing Fundamentals		Clinical Practicum	Career Readiness Cert; NA I Cert; HS Diploma	

*Satisfies the requirements to apply for the Associate Degree Nursing Program.

Note: ACA 111 and HSC 110 are paired in an online learning community.

^dOptional CTE Internship available (minimum 15 hours/week)

- Successful completion of this high school curriculum is no guarantee of acceptance into the Associate Degree Nursing Program. Admission to the program is competitive. Please visit www.pittcc.edu for more details (click on academics > programs > health sciences > admissions > admissions requirements).
- Individuals may apply to the Associate Degree Nursing Program from September 1 through April 30. To apply, contact health sciences admissions at 252-493-7473 or hltscadm@email.pittcc.edu
- Applicants will be notified by mail of their acceptance into the Associate Degree Nursing Program in late June. Those accepted will begin nursing courses in the fall and follow a prescribed curriculum over five semesters. Note: Applicants accepted to the Associate Degree Nursing Program will be required to submit active BLS Certification from the American Heart Association by July 1. Instructions for submitting BLS Certification will be included in the acceptance letter.

PCC SEMESTER	CREDENTIALS/CERTIFICATIONS/LICENSURE				CAREER GUIDANCE
Fall I	NUR 111*				Resume & Cover Letter Writing Mock Interviews Career Fair Job Tactics
Spring I	NUR 112*	NUR 114*			
Summer I	NUR 113*				
Fall II	NUR 211*	NUR 212	BIO 271		
Spring II	NUR 213*			AAS Degree in Nursing; NCLEX & NC License	

*Requires clinical practicum.

UNIVERSITY OPPORTUNITIES (RN-BSN)				
Appalachian State University*	East Carolina University*	Mars Hill University	Pfeiffer University	University of North Carolina at Greensboro*
Barton College	Fayetteville State University*	Miller-Motte College	Queens University of Charlotte	University of North Carolina at Pembroke*
Cabarrus College of Health Sciences	Gardner-Webb University	Montreat College	South University	University of North Carolina at Wilmington*
Catawba College	Lees-McRae College	North Carolina A&T State University*	University of Mount Olive	Western Carolina University*
Duke University	Lenoir-Rhyne University	North Carolina Central University*	University of North Carolina at Charlotte*	Winston-Salem State University*

*Follows RN-BSN Uniform Articulation Agreement: a partnership between North Carolina community colleges and constituent institutions of The University of North Carolina



PITT COMMUNITY COLLEGE
Career Pathway for Radiography
CLUSTER: HEALTH SCIENCE
Effective: September 20, 2017



Program Description: The Radiography curriculum prepares the graduate to be a radiographer, a skilled health care professional who uses radiation to produce images of the human body. Course work includes clinical rotations to area health care facilities, radiographic exposure, image processing, radiographic procedures, physics, pathology, patient care and management, radiation protection, quality assurance, anatomy and physiology, and radiobiology. Graduates of accredited programs are eligible to apply to take the American Registry of Radiologic Technologists' national examination for certification and registration as medical radiographers. Graduates may be employed in hospitals, clinics, physicians' offices, medical laboratories, government agencies, and industry.

The proposed curriculum below will prepare high school students to apply for admission to the Radiography Program. High school students must meet eligibility criteria to be a Career and College Promise student in order to take PCC courses. For more information on how to apply to PCC as a CCP student, contact the CCP office at 252-493-7411.

Core Requirement Major Concentration (4 credits) Mini Concentration (2 credits) Other Electives (5 credits)

HIGH SCHOOL GRADE	Students may take Honors/AP level courses where available.								WORK-BASED LEARNING ^g	CREDENTIALS/ CERTIFICATIONS	CAREER EXPLORATION
9	English I	Math I	Earth/ Environmental	World History	Health/PE	Arts Education	Mini Conc Elective	Biomedical Technology I			Career Assessment, Class Presentations, Health Fair, Career Fairs, Career Expo, Gear Up, Visions Tour, Destination Health Careers (camp)
10	English II	Math II	Biology	Civics & Economics	MS Word & PPT	Health Science I	Health Science II	Elective	Job Shadowing (25+ hours)	BLS Cert, MS Word Cert, & MS PPT Cert	
11	English III	Math III	Chemistry	American History I	American History II	ENG 111* (PCC)	PSY 150* (PCC)	ACA 111* & HSC 110* (PCC)			
12	ENG 112* (PCC)	MAT 143* (PCC)	BIO 163* (PCC)	HUM 115* (PCC)	Nursing Fundamentals		Elective	Elective	Clinical Practicum	Career Readiness Cert; NA I Cert; HS Diploma	

^gSatisfies the requirements to apply for the Radiography Program.

^gOptional CTE Internship available (minimum 15 hours/week)

Note: ACA 111 and HSC 110 are paired in an online learning community.

- Successful completion of this high school curriculum is no guarantee of acceptance into the Radiography Program. Admission to the program is competitive. Please visit www.pittcc.edu for more details (click on academics > programs > health sciences > admissions > admissions requirements).
- Individuals may apply to the Radiography Program from September 1 through April 30. To apply, contact health sciences admissions at 252-493-7473 or hltscadm@email.pittcc.edu
- Applicants will be notified by mail of their acceptance into the Radiography Program in late June. Those accepted will begin radiography courses in the fall and follow a prescribed curriculum over five semesters. Note: Applicants accepted to the Radiography Program will be required to submit active BLS Certification from the American Heart Association by July 1. Instructions for submitting BLS Certification will be included in the acceptance letter.

PCC SEMESTER	CREDENTIALS/CERTIFICATION/LICENSURE				CAREER GUIDANCE
Fall I	RAD 110	RAD 110	RAD 113	RAD 151*	Resume & Cover Letter Writing Mock Interviews Career Fair Job Tactics
Spring I	RAD 112	RAD 121	RAD 121	RAD 161*	
Summer I	RAD 122	RAD 141	RAD 171	RAD 181*	
Fall II	RAD 211	RAD 231	RAD 251*		
Spring II	RAD 261*	RAD 271			
AAS Degree in Radiography; ARRT-RT(R) Certification					

*Requires clinical practicum.

RELATED OPPORTUNITIES (STACKABLE CREDENTIALS) AVAILABLE AT PCC
CT/MRI Diploma: ARRT-RT(CT) Certification and ARRT-RT(MR) Certification
CT Certificate: ARRT-RT(CT) Certification
MRI Certificate: ARRT-RT(MR) Certification
Mammography Certificate: ARRT-RT(M) Certification
Nuclear Medicine Diploma: ARRT-RT(N) Certification
Radiation Therapy Diploma: ARRT-RT(T) Certification



PITT COMMUNITY COLLEGE
Career Pathway for Emergency Medical Science
CLUSTER: HEALTH SCIENCE
Effective: September 20, 2017



Program Description: The Emergency Medical Science (EMS) curriculum provides individuals with the knowledge, skills and attributes to provide advanced emergency medical care as a paramedic for critical and emergent patients who access the emergency medical system and prepares graduates to enter the workforce. Students will gain complex knowledge, competency, and experience while employing evidence-based practice under medical oversight, and serve as a link from the scene into the healthcare system. Graduates of this program may be eligible to take state and/or national certification examinations. Employment opportunities include providers of emergency medical services, fire departments, rescue agencies, hospital specialty areas, industry, educational and government agencies.

The proposed curriculum below will prepare high school students to apply for admission to the Emergency Medical Science Program. High school students must meet eligibility criteria to be a Career and College Promise student in order to take PCC courses. For more information on how to apply to PCC as a CCP student, contact the CCP office at 252-493-7411.

Core Requirement			Major Concentration (4 credits)			Mini Concentration (2 credits)			Other Electives (5 credits)		
HIGH SCHOOL GRADE	Students may take Honors/AP level courses where available.								WORK-BASED LEARNING ^a	CREDENTIALS/ CERTIFICATIONS	CAREER EXPLORATION
9	English I	Math I	Earth/ Environmental	World History	Health/PE	Arts Education	Mini Conc Elective	Biomedical Technology I			Career Assessment, Class Presentations,
10	English II	Math II	Biology	Civics & Economics	MS Word & PPT	Health Science I*^	Health Science II	Elective	Job Shadowing (25+ hours)	BLS Cert, MS Word Cert, & MS PPT Cert	Health Fair, Career Fairs,
11	English III	Math III	Chemistry	American History I	American History II	ENG 111* (PCC)	PSY 150* (PCC)	ACA 111* & HSC 110* (PCC)			Career Expo, Gear Up, Visions Tour,
12	ENG 112* (PCC)	MAT 143* (PCC)	BIO 163* (PCC)	HUM 115* (PCC)	Nursing Fundamentals		Elective	Elective	Clinical Practicum	Career Readiness Cert; NA I Cert; HS Diploma	Destination Health Careers (camp)

*Satisfies the requirements to apply for the Emergency Medical Science Program.

^aOptional CTE Internship available (minimum 15 hours/week)

[^] Medical Terminology (MED 120) is required for the Emergency Medical Science Program. Successful completion of Health Science I with a B or better and a 93 or better on the standardized CTE post-assessment satisfies this requirement.

Note: ACA 111 and HSC 110 are paired in an online learning community.

- Successful completion of this high school curriculum is **no guarantee of acceptance** into the Emergency Medical Science Program. Admission to the program is competitive. Please visit www.pittcc.edu for more details (click on academics > programs > health sciences > admissions > admissions requirements).
- Individuals may apply to the Emergency Medical Science Program from September 1 through April 30. To apply, contact health sciences admissions at 252-493-7473 or hltscadm@email.pittcc.edu
- Applicants will be notified by mail of their acceptance into the Emergency Medical Science Program in late June. Those accepted will begin EMS courses in the fall and follow a prescribed curriculum over five semesters.

PCC SEMESTER						CREDENTIALS/CERTIFICATION/LICENSURE	CAREER GUIDANCE
Fall I	EMS 110*					EMT Basic Certificate; EMT Certification	Resume & Cover Letter Writing
Spring I	EMS 112*	EMS 130	EMS 131	EMS 140	EMS 160		Mock Interviews
Summer I	EMS 221*	EMS 240	EMS 260				Career Fair
Fall II	EMS 220	EMS 231*	EMS 250	EMS 270			Job Tactics
Spring II	EMS 125	EMS 150	EMS 241*	EMS 285		AAS Degree in EMS; Paramedic Certification	

*Requires clinical practicum.

UNIVERSITY OPPORTUNITIES	
Western Carolina University: Bachelor of Science in Emergency Medical Care	



PITT COMMUNITY COLLEGE Career Pathway for Medical Assisting

CLUSTER: HEALTH SCIENCE

Effective: September 20, 2017



Program Description: The Medical Assisting curriculum prepares multi-skilled health care professionals qualified to perform administrative, clinical, and laboratory procedures. Course work includes instruction in scheduling appointments, coding and processing insurance accounts, billing, collections, computer operations, assisting with examinations/treatments, performing routine laboratory procedures, electrocardiography, supervised medication administration; and ethical/legal issues associated with patient care. Graduates of CAAHEP-accredited medical assisting programs may be eligible to sit for the American Association of Medical Assistants' Certification Examination to become Certified Medical Assistants. Employment opportunities include physicians' offices, health maintenance organizations, health departments, and hospitals.

The proposed curriculum below will prepare high school students to apply for admission to the Medical Assisting Program. High school students must meet eligibility criteria to be a Career and College Promise student in order to take PCC courses. For more information on how to apply to PCC as a CCP student, contact the CCP office at 252-493-7411.

	Core Requirement								Major Concentration (4 credits)	Mini Concentration (2 credits)	Other Electives (5 credits)
HIGH SCHOOL GRADE	Students may take Honors/AP level courses where available.								WORK-BASED LEARNING ^a	CREDENTIALS/ CERTIFICATIONS	CAREER EXPLORATION
9	English I	Math I	Earth/ Environmental	World History	Health/PE	Arts Education	Mini Conc Elective	Biomedical Technology I			
10	English II	Math II	Biology	Civics & Economics	MS Word & PPT	Health Science I [^] *	Health Science II [^] *	Elective	Job Shadowing (25+ hours)	BLS Cert, MS Word Cert, & MS PPT Cert	Career Assessment, Class Presentations, Health Fair, Career Fairs, Career Expo, Gear Up, Visions Tour, Destination Health Careers (camp)
11	English III	Math III	Chemistry	American History I	American History II	ENG 111* (PCC)	PSY 150* (PCC)	ACA 111* & HSC 110* (PCC)			
12	ENG 112* (PCC)	MAT 143* (PCC)	BIO 163* (PCC)	HUM 115* (PCC)	CIS 111* (PCC)	MED 118* (PCC)	Nursing Fundamentals		Clinical Practicum	Career Readiness Cert; NA I Cert; HS Diploma	

*Satisfies the requirements to apply for the Medical Assisting Program.

^aOptional CTE Internship available (minimum 15 hours/week)

[^] Medical Terminology (MED 121 and MED 122) and BLS Certification from the American Heart Association (MED 180) is required for the Medical Assisting Program. Successful completion of Health Science I and Health Science II with a B or better and a 93 or better on the standardized CTE post-assessment satisfies these requirements. Note: BLS certification must be active and cannot be expired at the time of enrollment in the program. Note: ACA 111 and HSC 110 are paired in an online learning community.

- Applicants are accepted into the Medical Assisting Program upon successful completion of admissions requirements and on a first come, first served basis as seats are limited. Admission to the program is not competitive. Please visit www.pittcc.edu for more details (click on academics > programs > health sciences > admissions > admissions requirements).
- To apply for the Medical Assisting Program, contact health sciences admissions at 252-493-7473 or hltsccadm@email.pittcc.edu
- Applicants accepted into the Medical Assisting Program may begin medical assisting courses in the fall, spring, or summer. Medical assisting courses may be completed in six semesters.

PCC SEMESTER	CREDENTIALS/CERTIFICATION/LICENSURE				CAREER GUIDANCE
Semester I	MED 110	MED 130	MED 270		Resume & Cover Letter Writing
Semester II	MED 150	MED 232 or OST 148			Mock Interviews
Semester III	MED 272	Elective			Career Fair
Semester IV	MED 114	MED 131	MED 140		Job Tactics
Semester V	MED 240	MED 276	SPA 120		
Semester VI	MED 260*	MED 262	MED 264	Degree in Medical Assisting; CMA (AAMA) Certification	

*Requires clinical practicum.



PITT COMMUNITY COLLEGE
Career Pathway for Therapeutic Massage
CLUSTER: HEALTH SCIENCE
Effective: September 20, 2017



Program Description: The Therapeutic Massage curriculum prepares graduates to work in direct client care settings to provide manipulation, methodical pressure, friction and kneading of the body for maintaining wellness or treating alterations in wellness throughout the lifespan. Courses will include content in normal human anatomy and physiology, therapeutic massage, ethical/legal issues, business practices, nutrition and psychology. Employment opportunities include hospitals/rehabilitation centers, health departments, home health, medical offices, nursing homes, spas/health/sports clubs, and private practice. Graduates may be eligible to take the Massage and Bodywork Licensing Exam.

The proposed curriculum below will prepare high school students to apply for admission to the Therapeutic Massage Program. High school students must meet eligibility criteria to be a Career and College Promise student in order to take PCC courses. For more information on how to apply to PCC as a CCP student, contact the CCP office at 252-493-7411.

										Core Requirement	Major Concentration (4 credits)
										Mini Concentration (2 credits)	Other Electives (5 credits)
HIGH SCHOOL GRADE	Students may take Honors/AP level courses where available.								WORK-BASED LEARNING [#]	CREDENTIALS/ CERTIFICATIONS	CAREER EXPLORATION
9	English I	Math I	Earth/ Environmental	World History	Health/PE	Arts Education	Mini Conc Elective	Biomedical Technology I			Career Assessment, Class Presentations, Health Fair, Career Fairs, Career Expo, Gear Up, Visions Tour, Destination Health Careers (camp)
10	English II	Math II	Biology	Civics & Economics	MS Word & PPT	Health Science I* [^]	Health Science II* [^]	Elective	Job Shadowing (25+ hours)	BLS Cert, MS Word Cert, & MS PPT Cert	
11	English III	Math III	Chemistry	American History I	American History II	ENG 111* (PCC)	ACA 111* (PCC)	HSC 110* (PCC)			
12	English IV	Math IV	BIO 163* (PCC)	PSY 150* (PCC)	Nursing Fundamentals		Elective	Elective	Clinical Practicum	Career Readiness Cert; NA I Cert; HS Diploma	

*Satisfies the requirements to apply for the Therapeutic Massage Program.

[#]Optional CTE Internship available (minimum 15 hours/week)

[^] Medical Terminology (MED 120) and BLS Certification from the American Heart Association (MED 180) is required for the Therapeutic Massage Program. Successful completion of Health Science I and Health Science II with a B or better and a 93 or better on the standardized CTE post-assessment satisfies these requirements. Note: BLS certification must be active and cannot be expired at the time of enrollment in the program.

Note: ACA 111 and HSC 110 are paired in an online learning community.

- Applicants are accepted into the Therapeutic Massage Program upon successful completion of admissions requirements and on a first come, first served basis as seats are limited. Admission to the program is not competitive. Please visit www.pittcc.edu for more details (click on academics > programs > health sciences > admissions > admissions requirements).
- To apply for the Therapeutic Massage Program, contact health sciences admissions at 252-493-7473 or hltsadm@email.pittcc.edu
- Applicants accepted into the Therapeutic Massage Program may begin therapeutic massage courses in the fall and follow a prescribed curriculum over three semesters.

PCC SEMESTER	CREDENTIALS/CERTIFICATION/LICENSURE				CAREER GUIDANCE
Fall I	MTH 110*				Resume & Cover Letter Writing
Spring I	MTH 120*	BIO 271			Mock Interviews
Summer I	MTH 121*	MTH 125	MTH 130	Diploma in Therapeutic Massage; MBLEX & NC License	Career Fair
					Job Tactics

*Requires clinical practicum.

RELATED OPPORTUNITIES (STACKABLE CREDENTIALS) AVAILABLE AT PCC
Therapeutic Massage AAS Degree



PITT COMMUNITY COLLEGE
Career Pathway for Health Information Technology
CLUSTER: HEALTH SCIENCE
Effective: September 20, 2017



Program Description: The Health Information Technology curriculum provides individuals with the knowledge and skills to process, analyze, abstract, compile, maintain, manage, and report health information. Students will supervise departmental functions; classify, code and index diagnoses and procedures; coordinate information for cost control, quality management, statistics, marketing, and planning; monitor governmental and non-governmental standards; facilitate research; and design system controls to monitor patient information security. Graduates of this program may be eligible to write the national certification examination to become a Registered Health Information Technician (RHIT). Employment opportunities include hospitals, rehabilitation facilities, nursing homes, health insurance organizations, out-patient clinics, physicians' offices, hospice, and mental health facilities.

The proposed curriculum below will prepare high school students to apply for admission to the Health Information Technology Program. High school students must meet eligibility criteria to be a Career and College Promise student in order to take PCC courses. For more information on how to apply to PCC as a CCP student, contact the CCP office at 252-493-7411.

Core Requirement Major Concentration (4 credits) Mini Concentration (2 credits) Other Electives (5 credits)

HIGH SCHOOL GRADE	Students may take Honors/AP level courses where available.								WORK-BASED LEARNING ^a	CREDENTIALS/ CERTIFICATIONS	CAREER EXPLORATION
9	English I	Math I	Earth/ Environmental	World History	Health/PE	Arts Education	Mini Conc Elective	Biomedical Technology I			Career Assessment, Class Presentations, Health Fair, Career Fairs, Career Expo, Gear Up, Visions Tour, Destination Health Careers (camp)
10	English II	Math II	Biology	Civics & Economics	MS Word & PPT	Health Science I* [^]	Health Science II	Elective	Job Shadowing (25+ hours)	BLS Cert, MS Word Cert, & MS PPT Cert	
11	English III	Math III	Chemistry*	American History I	American History II	ENG 111* (PCC)	PSY 150* (PCC)	ACA 111* & HSC 110* (PCC)			
12	ENG 112* (PCC)	MAT 143* (PCC)	BIO 168* (PCC)	BIO 169* (PCC)	HUM 115* (PCC)	CIS 111* (PCC)	Nursing Fundamentals		Clinical Practicum	Career Readiness Cert; NA I Cert; HS Diploma	

*Satisfies the requirements to apply for the Health Information Technology Program.

^aOptional CTE Internship available (minimum 15 hours/week)

[^] Medical Terminology (MED 121 and EMD 122 are required for the Health Information Technology Program. Successful completion of Health Science I with a B or better and a 93 or better on the standardized CTE post-assessment satisfies this requirement.

Note: ACA 111 and HSC 110 are paired in an online learning community.

- Applicants are accepted into the Health Information Technology Program upon successful completion of admissions requirements and on a first come, first served basis as seats are limited. Admission to the program is not competitive. Please visit www.pittcc.edu for more details (click on academics > programs > health sciences > admissions > admissions requirements).
- To apply for the Health Information Technology Program, contact health sciences admissions at 252-493-7473 or hltscadm@email.pittcc.edu
- Applicants accepted into the Health Information Technology Program may begin HIT courses in the fall or spring. HIT courses may be completed in five semesters.

PCC SEMESTER						CREDENTIALS/CERTIFICATION/LICENSURE	CAREER GUIDANCE
Semester I	HIT 110						Resume & Cover Letter Writing Mock Interviews Career Fair Job Tactics
Semester II	HIT 112	HIT 114					
Semester III	OST 248	HIT 210	HIT 216	HIT 220	HIT 218		
Semester IV	HIT 124*	HIT 226	HIT 211	HIT 225			
Semester V	HIT 214	HIT 215	HIT 224*	HIT 280		AAS Degree in HIT; RHIT Certification	

*Requires clinical practicum.

RELATED OPPORTUNITIES (STACKABLE CREDENTIALS) AVAILABLE AT PCC	UNIVERSITY OPPORTUNITIES
Advanced Medical Coding Certificate: CCS Certification and CCS-P Certification	East Carolina University: Bachelors of Science in Health Information Management

CLUSTER: HEALTH SCIENCE
Effective: September 20, 2017



The proposed curriculum below will prepare high school students to apply for admission to the Nuclear Medicine Technology Program. High school students must meet eligibility criteria to be a Career and College Promise student in order to take PCC courses. For more information on how to apply to PCC as a CCP student, contact the CCP office at 252-493-7411.

Core Requirement

Major Concentration (4 credits)

Mini Concentration (2 credits)

Other Electives (5 credits)

HIGH SCHOOL GRADE	Students may take Honors/AP level courses where available.								WORK-BASED LEARNING [#]	CREDENTIALS/ CERTIFICATIONS	CAREER EXPLORATION
9	English I	Math I	Earth/ Environmental	World History	Health/PE	Arts Education	Mini Conc Elective	Biomedical Technology I			Career Assessment, Class Presentations, Health Fair, Career Fairs, Career Expo, Gear Up, Visions Tour, Destination Health Careers (camp)
10	English II	Math II	Biology	Civics & Economics	MS Word & PPT	Health Science I	Health Science II	Elective	Job Shadowing (25+ hours)	BLS Cert, MS Word Cert, & MS PPT Cert	
11	English III	Math III	Chemistry	American History I	American History II	ENG 111* (PCC)	PSY 150* (PCC)	ACA 111* & HSC 110* (PCC)			
12	ENG 112* (PCC)	MAT 143* (PCC)	BIO 163* (PCC)	HUM 115* (PCC)	CIS 111* (PCC)	Elective	Nursing Fundamentals*^		Clinical Practicum	Career Readiness Cert; NA I Cert; HS Diploma	

[#]Optional CTE Internship available (minimum 15 hours/week)

Note: ACA 111 and HSC 110 are paired in an online learning community.

- Successful completion of this high school curriculum is no guarantee of acceptance into the Nuclear Medicine Technology Program. Admission to the program is competitive. Please visit www.pittcc.edu for more details (click on academics > programs > health sciences > admissions > admissions requirements).
- Individuals may apply to the Nuclear Medicine Technology Program from September 1 through April 30. To apply, contact health sciences admissions at 252-493-7473 or hltsccadm@email.pittcc.edu
- Applicants will be notified by mail of their acceptance into the Nuclear Medicine Technology Program in late June. Those accepted will begin nuclear medicine courses in the fall and follow a prescribed curriculum over three semesters. Note: Applicants accepted to the Nuclear Medicine Technology Program will be required to submit active BLS Certification from the American Heart Association and successful completion of NA I class by July 1. Instructions for submitting this documentation will be included in the acceptance letter.

PCC SEMESTER										CREDENTIALS/CERTIFICATION/LICENSURE	CAREER GUIDANCE
Fall I	NMT 110	NMT 110A	NMT 126	NMT 132*	NMT 134	NMT 214	NMT 212	NMT 212A		Resume & Cover Letter Writing Mock Interviews Career Fair Job Tactics	
Spring I	NMT 136	NMT 211*	NMT 215	NMT 222	NMT 222A						
Summer I	NMT 218	NMT 221*	NMT 289	PET 235					AAS Degree in Nuclear Medicine; ARRT-RT(N) Cert		
*Requires clinical practicum.											

*Requires clinical practicum.

RELATED OPPORTUNITIES (STACKABLE CREDENTIALS) AVAILABLE AT PCC

Positron Emission Tomography Diploma: PET Certification



PITT COMMUNITY COLLEGE
Career Pathway for Occupational Therapy Assistant
CLUSTER: HEALTH SCIENCE
Effective: September 20, 2017



Program Description: The Occupational Therapy Assistant (OTA) curriculum prepares individuals to work under the supervision of a registered/licensed occupational therapist in screening, assessing, planning, and implementing treatment and documenting progress for clients receiving occupational therapy services. Course work includes human growth and development, conditions which interfere with activities of daily living, theory and process of occupational therapy, individual/group treatment activities, therapeutic use of self, activity analysis, and grading/adapting activities and environments. Graduates may be eligible to take the national certification examination for practice as a certified OTA. Employment opportunities include hospitals, rehabilitation facilities, long-term/extended-care facilities, sheltered workshops, schools, home health programs, and community programs.

The proposed curriculum below will prepare high school students to apply for admission to the Occupational Therapy Assistant Program. High school students must meet eligibility criteria to be a Career and College Promise student in order to take PCC courses. For more information on how to apply to PCC as a CCP student, contact the CCP office at 252-493-7411.

Core Requirement Major Concentration (4 credits) Mini Concentration (2 credits) Other Electives (5 credits)

HIGH SCHOOL GRADE	Students may take Honors/AP level courses where available.								WORK-BASED LEARNING*	CREDENTIALS/CERTIFICATIONS	CAREER EXPLORATION
9	English I	Math I	Earth/Environmental	World History	Health/PE	Arts Education	Mini Conc Elective	Biomedical Technology I			Career Assessment, Class Presentations, Health Fair, Career Fairs, Career Expo, Gear Up, Visions Tour, Destination Health Careers (camp)
10	English II	Math II	Biology	Civics & Economics	MS Word & PPT	Health Science I	Health Science II	Elective	Job Shadowing (25+ hours)	BLS Cert, MS Word Cert, & MS PPT Cert	
11	English III	Math III	Chemistry	American History I	American History II	ENG 111* (PCC)	PSY 150* (PCC)	ACA 111* & HSC 110* (PCC)			
12	ENG 112* (PCC)	Math IV	BIO 168* (PCC)	BIO 169* (PCC)	HUM 115* (PCC)	PSY 241* (PCC)	Nursing Fundamentals		Clinical Practicum	Career Readiness Cert; NA I Cert; HS Diploma	

*Satisfies the requirements to apply for the Occupational Therapy Assistant Program.

*Optional CTE Internship available (minimum 15 hours/week)

Note: ACA 111 and HSC 110 are paired in an online learning community.

- Successful completion of this high school curriculum is no guarantee of acceptance into the Occupational Therapy Assistant Program. Admission to the program is competitive. Please visit www.pittcc.edu for more details (click on academics > programs > health sciences > admissions > admissions requirements).
- Additional general education courses required for the Occupational Therapy Assistant Program beyond those included in the proposed high school curriculum include CIS 110, COM 231, and PSY 281. Applicants are highly encouraged to complete these courses in the summer semester following high school graduation in order to be competitive for admission.
- Individuals may apply to the Occupational Therapy Assistant Program from May 1 through September 15. To apply, contact health sciences admissions at 252-493-7473 or hltscadm@email.pittcc.edu
- Applicants will be notified by mail of their acceptance into the Occupational Therapy Assistant Program in late October. Those accepted will begin OTA courses in the spring and follow a prescribed curriculum over six semesters.

PCC SEMESTER						CREDENTIALS/CERTIFICATION/LICENSURE	CAREER GUIDANCE
Spring I	OTA 110	OTA 120	OTA 130A				Resume & Cover Letter Writing Mock Interviews Career Fair Job Tactics
Summer I	OTA 130B	OTA 140					
Fall I	OTA 161*	OTA 170	OTA 220	OTA 240			
Spring II	OTA 150	OTA 162*	OTA 163*	OTA 180	OTA 250		
Summer II	OTA 245						
Fall II	OTA 260*	OTA 261*				AAS Degree in OTA; OTA Certification & NC License	

*Requires clinical practicum.

UNIVERSITY OPPORTUNITIES: (OT Certification & NC License)	
Cabarrus College of Health Sciences: Masters Degree in Occupational Therapy East Carolina University: Masters Degree in Occupational Therapy Lenoir-Rhyne University: Masters Degree in Occupational Therapy	University of North Carolina-Chapel Hill: Masters in Occupational Therapy Winston Salem State University: Masters in Occupational Therapy

A Bachelors Degree in a related field is required to apply to any of these programs as Occupational Therapy is only offered at the Masters Degree level. Contact the college/university for more details.



PITT COMMUNITY COLLEGE Career Pathway for Polysomnography

CLUSTER: HEALTH SCIENCE

Effective: September 20, 2017



Program Description: The Polysomnography curriculum prepares individuals, working in conjunction with a physician, to perform and interpret sleep studies and to provide comprehensive clinical evaluations that are required for the diagnosis of sleep related disorders. Students should acquire the knowledge and skills necessary to perform sleep studies, including recording and interpreting events observed during sleep. Treatment of sleep related disorders and patient education focused on healthy sleep habits will also be discussed. Graduates of accredited programs may be eligible to apply to take the examination offered by the Board of Registered Polysomnographic Technologists. Employment opportunities may be found in hospitals and freestanding sleep centers.

The proposed curriculum below will prepare high school students to apply for admission to the Polysomnography Program. High school students must meet eligibility criteria to be a Career and College Promise student in order to take PCC courses. For more information on how to apply to PCC as a CCP student, contact the CCP office at 252-493-7411.

Core Requirement Major Concentration (4 credits) Mini Concentration (2 credits) Other Electives (5 credits)

HIGH SCHOOL GRADE	Students may take Honors/AP level courses where available.								WORK-BASED LEARNING ^g	CREDENTIALS/CERTIFICATIONS	CAREER EXPLORATION
9	English I	Math I	Earth/Environmental	World History	Health/PE	Arts Education	Mini Conc Elective	Biomedical Technology I			Career Assessment, Class Presentations, Health Fair, Career Fairs, Career Expo, Gear Up, Visions Tour, Destination Health Careers (camp)
10	English II	Math II	Biology	Civics & Economics	MS Word & PPT	Health Science I* ^h	Health Science II* ^h	Elective	Job Shadowing (25+ hours)	BLS Cert, MS Word Cert, & MS PPT Cert	
11	English III	Math III	Chemistry	American History I	American History II	ENG 111* (PCC)	PSY 150* (PCC)	ACA 111* & HSC 110* (PCC)			
12	ENG 112* (PCC)	MAT 143* (PCC)	BIO 163* (PCC)	HUM 115* (PCC)	CIS 111* (PCC)	MED 118* (PCC)	Nursing Fundamentals		Clinical Practicum	Career Readiness Cert; NA I Cert; HS Diploma	

*Satisfies the requirements to apply for the Polysomnography Program.

^gOptional CTE Internship available (minimum 15 hours/week)

^h Medical Terminology (MED 121 and MED 122) and BLS Certification from the American Heart Association (MED 180) is required for the Polysomnography Program. Successful completion of Health Science I and Health Science II with a B or better and a 93 or better on the standardized CTE post-assessment satisfies these requirements. Note: BLS certification must be active and cannot be expired at the time of enrollment in the program. Note: ACA 111 and HSC 110 are paired in an online learning community.

- Successful completion of this high school curriculum is no guarantee of acceptance into the Polysomnography Program. Admission to the program is competitive. Please visit www.pittcc.edu for more details (click on academics > programs > health sciences > admissions > admissions requirements).
- Individuals may apply to the Polysomnography Program from September 1 through April 30. To apply, contact health sciences admissions at 252-493-7473 or hltscadm@email.pittcc.edu
- Applicants will be notified by mail of their acceptance into the Polysomnography Program in late June. Those accepted will begin nursing courses in the fall and follow a prescribed curriculum over five semesters.

PCC SEMESTER	CREDENTIALS/CERTIFICATION/LICENSURE				CAREER GUIDANCE
Fall I	PSG 110	PSG 112			Resume & Cover Letter Writing Mock Interviews Career Fair Job Tactics
Spring I	PSG 111	PSG 113	PSG 214		
Summer I	PSG 114*	PSG 215			
Fall II	PSG 210*				
Spring II	PSG 211*	PSG 212	PSG 213	AAS Degree in Polysomnography; RPSGT Certification	

*Requires clinical practicum.

UNIVERSITY OPPORTUNITIES

University of North Carolina-Chapel Hill: Bachelor of Science in Neurodiagnostics and Sleep Science



PITT COMMUNITY COLLEGE
Career Pathway for Respiratory Therapy
CLUSTER: HEALTH SCIENCE
Effective: September 20, 2017



Program Description: The Respiratory Therapy curriculum prepares individuals to function as respiratory therapists. In these roles, individuals perform diagnostic testing, treatments, and management of patients with heart and lung diseases. Students will master skills in patient assessment and treatment of cardiopulmonary diseases. These skills include life support, monitoring, drug administration, and treatment of patients of all ages in a variety of settings. Graduates of accredited programs may be eligible to take entry-level examinations from the National Board of Respiratory Care. Therapy graduates may also take the Advanced Practitioner examination. Graduates may be employed in hospitals, clinics, nursing homes, education, industry, and home care.

The proposed curriculum below will prepare high school students to apply for admission to the Respiratory Therapy Program. High school students must meet eligibility criteria to be a Career and College Promise student in order to take PCC courses. For more information on how to apply to PCC as a CCP student, contact the CCP office at 252-493-7411.

Core Requirement Major Concentration (4 credits) Mini Concentration (2 credits) Other Electives (5 credits)

HIGH SCHOOL GRADE	Students may take Honors/AP level courses where available.								WORK-BASED LEARNING [#]	CREDENTIALS/ CERTIFICATIONS	CAREER EXPLORATION
9	English I	Math I	Earth/ Environmental	World History	Health/PE	Arts Education	Mini Conc Elective	Biomedical Technology I			Career Assessment, Class Presentations, Health Fair, Career Fairs, Career Expo, Gear Up, Visions Tour, Destination Health Careers (camp)
10	English II	Math II	Biology	Civics & Economics	MS Word & PPT	Health Science I* [^]	Health Science II	Elective	Job Shadowing (25+ hours)	BLS Cert, MS Word Cert, & MS PPT Cert	
11	English III	Math III	Chemistry	American History I	American History II	ENG 111* (PCC)	PSY 150* (PCC)	ACA 111* & HSC 110* (PCC)			
12	ENG 112* (PCC)	MAT 143* (PCC)	BIO 163* (PCC)	HUM 115* (PCC)	Nursing Fundamentals		Elective	Elective	Clinical Practicum	Career Readiness Cert; NA I Cert; HS Diploma	

*Satisfies the requirements to apply for the Respiratory Therapy Program.

[#]Optional CTE Internship available (minimum 15 hours/week)

Note: ACA 111 and HSC 110 are paired in an online learning community.

- Successful completion of this high school curriculum is no guarantee of acceptance into the Respiratory Therapy Program. Admission to the program is competitive. Please visit www.pittcc.edu for more details (click on academics > programs > health sciences > admissions > admissions requirements).
- Individuals may apply to the Respiratory Therapy Program from September 1 through April 30. To apply, contact health sciences admissions at 252-493-7473 or hltscadm@email.pittcc.edu
- Applicants will be notified by mail of their acceptance into the Respiratory Therapy Program in late June. Those accepted will begin respiratory therapy courses in the fall and follow a prescribed curriculum over five semesters. Note: Applicants accepted to the Respiratory Therapy Program will be required to submit active BLS Certification from the American Heart Association by July 1. Instructions for submitting BLS Certification will be included in the acceptance letter.

PCC SEMESTER	CREDENTIALS/CERTIFICATION/LICENSURE					CAREER GUIDANCE
Fall I	RCP 110	RCP 113	RCP 122			Resume & Cover Letter Writing Mock Interviews Career Fair Job Tactics
Spring I	RCP 111	RCP 114	RCP 123	RCP 134*		
Summer I	RCP 112	RCP 115	RCP 143*	RCP 222		
Fall II	RCP 155*	RCP 210	RCP 214	RCP 223		
Spring II	RCP 211	RCP 215	RCP 236*		AAS Degree in Respiratory Therapy; CRT Certification, RRT Certification, & NC License	

*Requires clinical practicum.

RELATED OPPORTUNITIES (STACKABLE CREDENTIALS) AVAILABLE AT PCC	UNIVERSITY OPPORTUNITIES
Polysomnography Certificate: RPSGT Certification	University of North Carolina-Chapel Hill: Bachelor of Science in Respiratory Therapy



PITT COMMUNITY COLLEGE
Career Pathway for Medical Sonography
CLUSTER: HEALTH SCIENCE
Effective: September 20, 2017



Program Description: The Medical Sonography curriculum provides knowledge and clinical skills in the application of high frequency sound waves to image internal body structures. Course work includes physics, cross-sectional anatomy, and abdominal, introductory vascular and obstetrical/gynecological sonography. Competencies are attained in identification of normal anatomy and pathological processes, use of equipment, fetal growth and development, integration of related imaging, and patient interaction skills. Graduates of accredited programs may be eligible to take examinations in ultrasound physics and instrumentation and specialty examinations administered by the American Registry of Diagnostic Medical Sonographers and find employment in clinics, physicians' offices, mobile services, hospitals, and educational institutions.

The proposed curriculum below will prepare high school students to apply for admission to the Medical Sonography Program. High school students must meet eligibility criteria to be a Career and College Promise student in order to take PCC courses. For more information on how to apply to PCC as a CCP student, contact the CCP office at 252-493-7411.

Core Requirement Major Concentration (4 credits) Mini Concentration (2 credits) Other Electives (5 credits)

HIGH SCHOOL GRADE	Students may take Honors/AP level courses where available.								WORK-BASED LEARNING [#]	CREDENTIALS/CERTIFICATIONS	CAREER EXPLORATION
9	English I	Math I	Earth/Environmental	World History	Health/PE	Arts Education	Mini Conc Elective	Biomedical Technology I			Career Assessment, Class Presentations, Health Fair, Career Fairs, Career Expo, Gear Up, Visions Tour, Destination Health Careers (camp)
10	English II	Math II	Biology	Civics & Economics	MS Word & PPT	Health Science I	Health Science II	Elective	Job Shadowing (25+ hours)	BLS Cert, MS Word Cert, & MS PPT Cert	
11	English III	Math III	Chemistry	American History I	American History II	ENG 111* (PCC)	PSY 150* (PCC)	ACA 111* & HSC 110* (PCC)			
12	ENG 112* (PCC)	MAT 171* (PCC)	BIO 163* (PCC)	HUM 115* (PCC)	PHY 110* (PCC)	PHY 110A* (PCC)	Nursing Fundamentals* [^]		Clinical Practicum	Career Readiness Cert; NA I Cert; HS Diploma	

*Satisfies the requirements to apply for the Medical Sonography Program.

[#]Optional CTE Internship available (minimum 15 hours/week)

[^] Successful completion of NA I class is required to apply to the Medical Sonography Program. Successful completion of Nursing Fundamentals with a C or better satisfies this requirement.

Note: ACA 111 and HSC 110 are paired in an online learning community.

- Successful completion of this high school curriculum is no guarantee of acceptance into the Medical Sonography Program. Admission to the program is competitive. Please visit www.pittcc.edu for more details (click on academics > programs > health sciences > admissions > admissions requirements).
- Individuals may apply to the Medical Sonography Program from September 1 through April 30. To apply, contact health sciences admissions at 252-493-7473 or hltsadm@email.pittcc.edu
- Applicants will be notified by mail of their acceptance into the Medical Sonography Program in late June. Those accepted will begin medical sonography courses in the fall and follow a prescribed curriculum over five semesters. Note: Applicants accepted to the Medical Sonography Program will be required to submit active BLS Certification from the American Heart Association and successful completion of NA I class by July 1. Instructions for submitting this documentation will be included in the acceptance letter.

PCC SEMESTER	CREDENTIALS/CERTIFICATION/LICENSURE				CAREER GUIDANCE
Fall I	SON 110	SON 130	SON 222*	SON 111	Resume & Cover Letter Writing Mock Interviews Career Fair Job Tactics
Spring I	SON 120	SON 131	SON 140	SON 250	
Summer I	SON 121				
Fall II	SON 220	SON 225	SON 241		
Spring II	SON 221	SON 242	SON 289		
AAS Degree in Medical Sonography; ARDMS Certifications in Abdomen and OB					

*Requires clinical practicum.

RELATED OPPORTUNITIES (STACKABLE CREDENTIALS) AVAILABLE AT PCC
Echocardiography Diploma: Eligible for ARDMS Certification in Cardiac

Criteria 3.0

NC Northeast Health Care Pathways Collaboration – Pitt County

3. Collaboration - Date(s) of meetings with all partnering entities present to gather input and develop/finalize local pathways, and implementation plans (minimum of one face-to-face meeting required). Documentation of collaboration, i.e. agenda(s), sign-in sheets is required.

Provide meeting documentation below (expand this section to include additional meetings). Documentation may be attached. Team member representations must be clearly defined.

Meeting Date: **September 20, 2017** Location: **Pitt Community College**

List Names of Team Members Present

Community College – **Donna Neal, Sidette Brown, Laurie Weston, Rachel Bridgers, Lori Preast, Amy Harris**

LEAs – **Beth Ann Trueblood, Simone Pate, Jennifer Johnson**

Workforce Development Bds. – **Wayne Rollins, Chanda Speller**

Health Care Employers – **Tywanna Purkett (Vidant Medical Center), Sherry Stone (VMC), P. Scott Cole (Physician's East), Sarah Everette (Cypress Glen), Caryl Holoman (ECU Physicians), Mandy Tigert (Physician's East), Jill Berman (Massage Envy), David Edwards (Kinetic PT & Wellness), Lisa Lassiter (VMC)**

Others (list agency/position) – **Christy Harris (NCDPI)**

Local Health Care Pathway Certification Partnership Meeting

September 20, 2017 | 8:00 – 9:30 AM | Herman Simon Building, Room 201

I. Welcome, Introductions, Overview

II. Certification Criteria 2: Modified Local Pathways

- A. Pitt County Schools and Pitt Community College Health Care pathways – *Donna Neal, Beth Ann Trueblood*
- B. Discussion with Employers – *Rachel Bridgers to lead*

III. Certification Criteria 4: Work-Based Learning

- A. Review list of employers offering work-based learning opportunities for community college students and WDB clients – *Donna Neal, Sidette Boyce, Wayne Rollins*
- B. Review list of employers offering work-based learning opportunities for high school students – *Beth Ann Trueblood, Jennifer Johnson*
- C. Discussion with Employers – *Rachel Bridgers to lead*

IV. Certification Criteria 5: Career Awareness

- A. Review Career Development Plans from LEAs, Workforce Development Boards, and Community College – *Rachel Bridgers to review list*
- B. Review targeted certified pathway career awareness activities held or planned (both by individual agencies and collaborative elements) - *Rachel Bridgers to review list*
- C. Brainstorm with Employers

V. Certification Criteria 6: Adult Learner Focus

- A. Review and vet status of adult pathways developed by Pitt Community College in collaboration with Workforce Development Board – *Laurie Weston, Sidette Boyce, Wayne Rollins, Chanda Speller*
- B. Brainstorm strategies for increasing access to pathways by adults and other non-traditional students/clients. – *Rachel Bridgers to start discussion*
- C. Brainstorm how to further increase coordination and collaboration between NCWorks Centers and Community College Adult Education Programs – *Rachel Bridgers to start discussion*

VI. Next Steps

Sign-In Sheet

Event: Healthcare Pathway Partnership Meeting	Meeting Date:	Wednesday, September 20, 2017
Time: 8:00 am - 9:30 am	Location:	Pitt Community College, HS 201

	Name	Title	Organization	Email
1	Wayne Rollins	9/20/17	Region Q WDB	wrollins@midexcom.org
2	Christina Harris	RC	NCDPI	christina.harris@dpi.nc.gov
3	CARIL Holoman	Clinical OPS	ECU	holomanc@ecu.edu
4	Mandy Tigert	HR	Phys East	mtigert@physicianeast.com
5	Donna Neal	Dean, Health Sciences	PCC	dneal@email.pittcc.edu
6	Simone Pate	Work Based Learning	PC Schools	pates@pitt.k12.nc.us
7	Jill Berman	Assistant Clinic Manager	Massage Envy	cm1013@massageenvy.com
8	David Edwards	Physical Therapist	Kinetic PT & Wellness	dkdavidedwards@kptonline.com
9	Lisa Lassiter	Admin Health Careers	Vidant Health	llassite@vidanthealth.com
10	Beth Ann Trueblood	CTE Director	P.H. County Schools	trueblb@pitt.k12.nc.us
11				
12				
13				
14				
15				
16				
17				
18				
19				
20				
21				
22				

Sign-In Sheet

Event: Healthcare Pathway Partnership Meeting	Meeting Date:	Wednesday, September 20, 2017
Time: 8:00 am - 9:30 am	Location:	Pitt Community College, HS 201

	Name	Title	Organization	Email
1	Tywanne Purkett	Ed. Specialist	VMC	tywanna.purkett@vidanthealth.com
2	Sherry Stone	Ed Specialist	VMC	sherry.stone@vidanthealth.com
3	Dei Priest	AVPAA	PCC	lpriest@email.pittcc.edu
4	Sidette Brown	Healthcare Director	PCC	slouco@email.pittcc.edu
5	Chanda Speller	Director Advisor	NCWorks	Chanda.Speller@nccommerce.com
6	P. Scott Cole	Dir of HR	Physicians East	scole@physicians-east.com
7	Sarah Everette	Dir of Health Serv.	Cypress Glen	severette@umrh.org
8	Lanne Weston	Director Trans. Studies	PCC	lweston@email.pittcc.edu
9	Jennifer Johnson	Coordinator HSA	Pitt County Schools	johnsoj3@pitt.k12.nc.us
10	Amy Harns	Admin Asst.	PCC	aharns@email.pittcc.edu
11	Rachel Midgers	Career Outreach Spec.	PCC	rmidgers@email.pittcc.edu
12				
13				
14				
15				
16				
17				
18				
19				
20				
21				
22				

Criteria 4.0

**NC Northeast Health Care Pathways
Work-Based Learning Activities 2016-17 – Pitt County**

					Work-based learning components as defined by the application criteria					
Business/Indus.	Contact Information	Comm. College	HS	WDB	Approx. Number of individuals served annually	Job-Shadowing if 15+ hours (HSA)	Internship (unpaid)	Internship (paid)	Clinical Practicum	Work-study
Pitt County Schools: Health Sciences Academy										
Approximate number of students served in 2016-17: 997 students (43,042.10 hours of volunteer service to date)										
American Cancer Society (at least 16 yrs. of age)	Bonnie Sargent		x			x				
American Cancer Society - Hope Lodge (at least 16 yrs. of age)	Katrina Combs		X			X				
American Red Cross/Blood Donor Services	Kristin Cartwright		x			x				
AseraCare Hospice	Jessica Respass		x			x				
Community Home Care and Hospices	Kelly Graham		x			x				
Council On Aging	Gus Benson		x			x				
Creative Learning Center (adult daycare)	Sabrina Barham		x			x				
First Born Community Development Center			x			x				
Golden Living Center	Terry Edwards		x			x				
Home Health & Hospice Care	Kim Johnson		x			x				
Hope Lodge (at least 16 yrs. of age)	Katrina Combs		x			x				
Marley's Cat Tales	Joy Eubanks		x			x				
PCSAC -Pitt County Substance Abuse Coalition			x			x				
Pitt County Red Cross Youth Board	Donna Dorsey		x			x				
United Hospice of Eastern Carolina - Farmville	Thomas H. Boone		x			x				
VolunTEEN Program/Vidant Medical	Chad Tucker		x			x				
Pitt Community College										
Continuing Education Clinical Practicum Sites – Approximate number of students served in 2016-17: 427 students										
McGregor Downs	Mary Worthington	X			79				X	
Cypress Glenn Retirement Community	Sarah Everette/Kimberly Delgado	X			101				x	

Ayden Court Nursing & Rehab	Sharrie Mooring	X			88				x	
Vidant Medical Center	Sherry Stone/Tywanna Purkett	X			109				x	
Pitt County Health Department	Denise Woolard	X			11				x	
Physicians East, PA	Becky Oaks	X			6				x	
Kinston Medical Specialists	India Stanley	X			4				x	
Martin General Hospital	Kristin Sawyer/Tammy Manning	X			1				x	
Wayne Memorial Hospital	Doshi Nicole Moore	X			25				x	
East Carolina Heart Institute	Lillian Bourke, MD	X			2				x	
Red Cross	Cally Edwards	X			1				x	
Pitt Community College Health Sciences Division (Curriculum) – Approximate number of students served in 2016-17: 777 students										
Ayden Rescue & EMS	Joseph Butler	X			20				X	
Bell Arthur EMS	Jesse Harris	X			2				X	
Carolina Breast Imaging Specialists	Dr. Bruce Schroeder	X			2				X	
Carolina Sleep Center	Robert Moore	X			14				X	
Children's Heart Specialist	David Fairbrother	X			6				X	
Cypress Glen	Sarah Everett	X			40				X	
Dept. of Veteran's Affairs-Greenville	Kristen Savage	X			6				X	
ECU Physicians	Dr. Garris Conner	X			12				X	
Eastern Radiologists	Walter Lindstrand	X			48				X	
Family Medical Supply	Danny Hamilton	X			18				X	
Physicians East	Scott Cole	X			92				X	
Pitt County EMS	James McCarthur, Jr	X			20				X	
RHA Howell Care Center	Tonya Lyons	X			18				X	
Vidant Medical Center	Tywanna Purkett/Sherry Stone	X			459				X	
Winterville Rescue/EMS	Richard Britt, Jr	X			20				X	
Workforce Development Board NCWorks (WIOA-funded candidates) – Approximate number of students served in 2016-17: 6 students										
					6				X	

Health Sciences Academy Volunteer Hours Information: All HSA students must complete 25 hours of volunteer work at an approved agency/location during each academic year for a total of 100 hours by April 1st of the student's senior year. Of the 100 hours total that a student completes, at least 25 of these need to be performed in a clinical setting, i.e. doctor's office, dental office, vet office, nursing facility

Criteria 5.0

**NC Northeast Health Care Pathways
Comprehensive Career Guidance and Counseling – Pitt County**

5.1 Northeastern NC Works Pathways – Pitt County Comprehensive Career Guidance and Counseling

	(1) Self-Awareness	
Middle School	<ol style="list-style-type: none"> 1. Conduct role playing scenarios (e.g. personality type, values, conflict management/bullying) (6-8) 2. Use the “Skills to Pay the Bills” lessons (6 lessons, perhaps two lessons per grade level) (6-8) 3. Use the “Who Am I” lessons from the middle school career development course (8) 4. Have personal conversations with students to link academic and aptitude strengths and challenges with future career interests/goals (8) 5. Print student interests responses in ACT EXPLORE and go to CFNC to research learning styles. (8) 6. Administer a learning style inventory (8) 	
High School	<ol style="list-style-type: none"> 1. Use personality assessments and inventories to explore self-awareness (9-10) 2. Use the interest inventory from the ACT PLAN assessment (10) 3. Use the interest inventory from CFNC (9-12) 4. Use class meetings (where available) or other counseling sessions to emphasize the link between academic and aptitude strengths, and challenges with future career interests/goals (e.g. GPA) (9-12) 5. Provide CTE specific training (clusters, poverty, curriculum, concentrator) for counselors and CDCs (9-12) 6. Conduct a session with students to explore self-awareness using the results of the ASVAB (11-12) 	
Community College	<ol style="list-style-type: none"> 1. CFNC interest inventories 2. Career Readiness Certification (CRC) scores 3. Occupational Outlook book available to students 4. O-NET activities 5. Virtual Job Shadow 6. Myers-Briggs Inventory 7. ABLE (Adult Basic Learning Exam) 8. Texas Counseling to Careers Toolkit 9. Integrating Career Awareness in the ABE & ESOL Classroom 10. MECA training kits and software by Conover (https://www.conovercompany.com/education/meca/) 	
Workforce Dev. Board	<p>Adults</p> <p>Use of the following tools:</p> <ol style="list-style-type: none"> 1. CFNC interest inventories 2. CRC scores 3. NCWorks Self-assessments tools 4. O-NET activities 5. TABE (Test of Adult Basic Education) 6. “My Next Move” 	<p>Non-adults</p> <p>Use of the following tools:</p> <ol style="list-style-type: none"> 1. CFNC interest inventories 2. CRC scores 3. ACT Interest Inventory 4. SAT scores 5. NCWorks Self-assessments tools 6. ONET activities 7. “My Next Move,” TABE

	(2) Career Awareness, Exploration, and Goal Setting		
Middle School	<ol style="list-style-type: none"> 1. Hold a career fair (6-8) 2. Encourage membership in CTSO's (6-8) 3. Set up web based accounts (i.e. CFNC) (7-8) 4. Provide career based field trips/virtual field trips (7-8) 5. Invite business/industry guest speakers (7-8) 6. Invite post-secondary education guest speakers (7-8) 7. Discuss the results of the ACT EXPLORE Assessment (8) 8. Initiate individual career development plans (8) 9. Initiate High School CFNC Portfolio (cluster/course selection) (8) 10. Conduct career counseling lessons (e.g. goal setting, importance of staying in school, links between course selection and career interests, etc.) (8) 11. Explore careers through websites (8) 12. Participate in shadowing experiences like Groundhog Shadowing or go to work for a day (8) 		
High School	<ol style="list-style-type: none"> 1. Visit all English classes (9-12) or other subjects in which the entire grade level can be exposed, and work with students on the following: update CFNC accounts; update career development plans; LSI update; take a career interest inventory; portfolio updates (e.g. awards, test scores, community service); and match "Career to College to Degrees" to Job Outlook (9-12) 2. Organize cluster based career fairs (9-12) 3. Involve students in industry internships as well as community volunteering and service projects (9-12) 4. Organize virtual/face-to-face college tours (2yr/4yr) (9-12) 5. Coordinate with local community college for college fair and college reps in classrooms (9-12) 6. Utilize O*Net (9-12) 7. Partner with Community College in sponsoring a learning about careers event for students and parents (9-12) 8. Encourage membership in CTSO's (9-12) 9. Provide virtual and face-to-face job shadowing opportunities (10-12) 10. Begin college application process (11-12) 11. Host financial aid workshops (11-12) 		
Community College	<ol style="list-style-type: none"> 1. NCWorks Career Coaches 2. Success Navigators for 1st Year students (centralized academic advising per division) 3. Focus orientation activities to include career awareness, exploration and goal setting 4. Classroom presentations, Health Fairs (ConEd) 5. Structured one on one counseling focused on goal setting 6. Career Fairs (Curriculum): CareerFest (exploration event), Health Fair, Spring Career Fair 7. Awareness & Goal-Setting (curriculum): Lounge & Learns, Health Care Mock Interviews, Classroom Presentations 8. Texas Counseling to Careers Toolkit 9. Integrating Career Awareness in the ABE & ESOL Classroom 10. MECA training kits and software by Conover (https://www.conovercompany.com/education/meca/) 		
Workforce Dev. Board	<p>Adults</p> <ol style="list-style-type: none"> 1. Job fairs 2. Work mentoring through Title V program 3. Utilize ONET activities 4. Work First shadowing activities 	<ol style="list-style-type: none"> 5. Utilization of community college instructors to hold workshops 6. OJT 7. NCWorks.gov research/activities 8. Financial literacy workshops 	<p>Non-adults</p> <ol style="list-style-type: none"> 1. Industry shadowing 2. Money management/budgeting workshops 3. Career Scope 4. Company tours 5. OJT 6. Entrepreneurship workshops 7. HRD classes

	(3) High School Course Selection and Post-Secondary Planning	
Middle School	<ol style="list-style-type: none"> 1. Link activities in the self-awareness and exploration sections above to H.S. and post-secondary planning (CFNC, job fairs/career expos, EXPLORE, etc.) (6-8) 2. High school tours (8) 3. Initiate H.S. course selection work with Career Development Plan (8) 4. Use the ACT EXPLORE assessment report to guide H.S. course selection (8) 5. Team Career Development Coordinators with counselors in conducting the H.S. course registration process (8) 6. Assist in planning and encourage participation in high school orientations, parent nights, CTE displays, etc.) (8) 	
High School	<ol style="list-style-type: none"> 1. Use the “A Look at Me” lessons in the Career Management Course Bureau (9-10) 2. Develop and utilize career cluster commitment letters and contracts (9-10) 3. Use ACT PLAN assessments and questionnaires in the planning process (10) 4. Student-parent meetings to discuss the link between course selection, assessment results, college articulation, post-secondary planning and career interests. (9-12) 5. CDC and counselors work as a team to establish one-to-one guidance relationships with students-review and discuss post-secondary opportunities, ASVAB, PSAT, SAT, ASSET, Work Keys, ACT (9-12) 6. Sponsor Lunch and Learn Lab and/or Power Lunches—focus on “soft” and “technical” skills (9-12) 	<ol style="list-style-type: none"> 7. Organize Career Fairs, Curriculum Fairs, College Days and College Weeks (involving all teachers/ staff) (9-12) 8. Expand certification programs (9-12) 9. Prepare a “College Articulation” lesson to be taught by all CTE teachers the first week of school (9-12) 10. Hold encouragement rallies (guest speakers, pep rallies) (9-12) 11. Develop a mentoring program (9-12) 12. Plan multilingual awareness advertising campaign with supportive media strategies (9-12) 13. Develop strategies that encourage and recognize credentials (9-12) 14. Institute an upper class mentor program (11-12) 15. Expand job shadowing and internship programs (11-12) 16. Assist students with registering CRC credential (12)
Community College	<ol style="list-style-type: none"> 1. One-on-one counseling with ConEd students interested in furthering their education and obtaining stackable credentials 2. Individual counseling sessions (Curriculum) 3. Assignment of Faculty Advisors (past 1st 12 credit hours) 4. Articulated credit 5. Credit for industry certifications earned while in H.S. 6. Utilizing SAT/ACT and pre-ACT scores 	
Workforce Dev. Board	<p style="text-align: center;">Adult</p> <ol style="list-style-type: none"> 1. Career fairs 2. Curriculum fairs 3. STEM fairs 4. Advanced Manufacturing Day 	<p style="text-align: center;">Non-adults</p> <ol style="list-style-type: none"> 1. Career fairs 2. Curriculum fairs 3. STEM fairs 4. Advanced Manufacturing Day

	(4) Personal/Employability Skills Development	
Middle School	<ol style="list-style-type: none"> 1. Conduct ethics sessions (i.e. desired character traits, team building, problem solving, etc.) using role playing, simulations and guest speakers (6-8) 2. Develop assessment rubrics to provide students feedback on “soft” skills related to assigned projects, presentations, mock interviews and work-based learning experiences (i.e. speaking, team work, pride in outcome, being prepared, punctuality, etc.) (7-8) 3. Prepare students for work based learning explorations (shadowing, lunch/learn, field trips, guest speakers) through role scenarios. (7-8) 	
High School	<ol style="list-style-type: none"> 1. Develop assessment rubrics to provide students feedback on “soft” skills related to assigned projects, presentations, mock interviews and work-based learning experiences (i.e. speaking, team work, pride in outcome, being prepared, punctuality, etc.) (9-12) 2. Encourage membership in CTSO’s (9-12) 3. Organize a school-wide “Work Day” where students come in professional dress, learn about careers, focus on soft skills, resume writing, job applications and interviewing skills. (9-12) 4. Provide mini lessons on workplace responsibility, e.g. on time, bring prepared, pride in outcome, etc. (9-12) 5. Organize a full range of work based learning experiences providing specific instruction and feedback on personal and employability skills, e.g. guest speakers, lunch/learn sessions, field trips, job shadows, internships, apprenticeships, entrepreneurial workshops. (9-12) 	<ol style="list-style-type: none"> 6. Utilize Career 101 soft skills assessments, and NC-Net Employability Skills Resource Tool Kit (free) (9-12) 7. Provide workshops/sessions on job readiness and “soft” skills, e.g. resume writing, cover letters, mock job interviews, workplace ethics scenarios. (11-12) 8. Define and target emphasis on specific locally identified high need soft skills, e.g. workplace responsibility, teamwork public speaking, etc. (11-12) 9. Require students to make professional presentations, e.g. Graduation Projects (11-12) 10. Involve students in industry internships as well as community volunteering and service projects. (11-12)
Community College	<ol style="list-style-type: none"> 1. Human Resource Development (HRD) courses 2. ACA soft skills curriculum 3. Texas Counseling to Careers Toolkit 4. Integrating Career Awareness in the ABE & ESOL Classroom 5. Working Smart 6. MECA training kits and software by Conover (https://www.conovercompany.com/education/meca/) 	
Workforce Dev. Board	<p style="text-align: center;">Adult</p> <ol style="list-style-type: none"> 1. Job Shadowing 2. Internships 3. Career Center training based on specific employer feedback/needs 4. Apprenticeships 5. Volunteer Programs (Serv.gov, volunteer.gov, volunteermatch) 	<p style="text-align: center;">Non-adult</p> <ol style="list-style-type: none"> 1. Job Shadowing 2. HRD 3. Volunteer Programs (Serv.gov, volunteer.gov, volunteermatch) 4. Registered Apprentice Program 5. Summer Employment Opportunities

5.2 Northeastern NC Works Pathways – Pitt County Health Care Career Awareness Activities 2016-17

Entity	Health Care Pathway Career Awareness Activity	Date	Activity Description
Pitt County Schools CTE/Health Science Academy	<ol style="list-style-type: none"> 1. Career Fair 2. Career Fair @ HOSA 3. Destination Health Careers 4. VISIONS Tours 5. Classroom Presentations 6. ECU Senior Night 7. ECU Junior Expo 8. Exploring Dental Medicine Day 9. Pathology Night 	<ol style="list-style-type: none"> 1. Spring 2. Spring 3. Summer 4. Summer 5. All Year 6. Fall 7. Fall 8. Late Summer (August) 9. Spring (Feb) 	<ol style="list-style-type: none"> 1. Health professionals set up booths for 9th graders 2. Health Care professionals are asked to setup booths to discuss careers with students in between competitions. 3. Students enrolled in Health Science Academy attend Pitt Community College to visit all program areas available the summer before Junior year. 4. Students who have earned VISIONS scholarships are given the opportunity to tour program areas of interest. VISIONS students are taken to Pitt Community College the summer before their senior year to tour health science departments 5. Teachers ask health care professionals to present to their classes throughout the year. 6. ECU senior night: students have the opportunity to visit information booths and information sessions to learn more about the Honors College, financial aid, and admissions, undergraduate and graduate programs. 7. ECU Junior expo: students have the opportunity to visit information booths and information sessions to learn more about the honors college, financial aid, admissions, undergraduate and graduate programs. 8. Exploring dental health careers: and event during the summer, generally late August. 20 to 30 students are invited to participate in a tour and learn more about the school of dental medicine. The highlight of the event students get to make a mold of teeth with an impression and solve "mysteries" in a simulated CSI: Greenville. 9. Pathology Night at the Brody School of Medicine: students are able to explore the school of medicine, talk to current medical students and explore the pathology discipline. Event takes place in February in collaboration with the Brody school of medicine ambassadors

Entity	Health Care Pathway Career Awareness Activity	Date	Activity Description
Pitt Community College - Curriculum	<ol style="list-style-type: none"> 1. Mock Interviews 2. CareerFest 3. All Majors Career Fair 4. Health Fair 	<ol style="list-style-type: none"> 1. November 2016 2. Sept.22, 2016 and Sept. 21, 2017 3. April 2017 4. April 12, 2017 	<ol style="list-style-type: none"> 1. Health Care professionals participate in Mock Interviews with current Health Sciences students. Many employers use this as an opportunity to pre-screen applicants for vacant positions.

			<ol style="list-style-type: none"> 2. CareerFest is a Career Exploration/Awareness event where students meet professionals within specific career clusters to learn more about career options 3. The All Majors Career Fair is a campus-wide career fair to allow students of all majors (health sciences included) 4. Health Fair is designed to highlight various facets of health care and involved many Health Sciences students, as well as PCS HS students.
Pitt Community College – Continuing Education	<ol style="list-style-type: none"> 1. Health Fair- Farmville Middle School 2. Presentation- Third Street School parents of Healthcare programs 3. Healthcare Pathways Presentation to PCC Visions 4. Career Expo 5. Healthcare Pathways Presentation to the PCC Transitional Studies programs 6. Winterville on the Market 7. Partnership with the Greenville Housing Authority (Moyewood) 	<ol style="list-style-type: none"> 1. April 2017 2. February 2017 3. May 2016 & June 2017 4. April 2017 5. March 2016 & January 2017 6. July 2017 7. Ongoing- multiple dates and meetings. 	<ol style="list-style-type: none"> 1. Marketed Healthcare careers and program offerings at PCC ConEd 2. Recruitment for Healthcare Programs 3. Presentation to PCC Visions of Healthcare pathways in PCC ConEd Healthcare Programs & recruitment for Healthcare Programs 4. Highlighted Healthcare Programs and demonstration of NA I skills and glow germ 5. Presentation to PCC Transitional Studies of Healthcare pathways in PCC ConEd Healthcare Programs & recruitment for Healthcare Programs 6. Recruitment for Healthcare Programs 7. Recruiting students for the NA I program and possibly putting a NA I program site in the Moyewood Community Center
Entity	Health Care Pathway Career Awareness Activity	Date	Activity Description
Region Q Workforce Development Board	<ol style="list-style-type: none"> 1. Development of brochure specifically targeted towards Health Care Careers 2. Vidant Learning Lab (to be confirmed) 	<ol style="list-style-type: none"> 1. Fall 2017 2. 2017-18 	<ol style="list-style-type: none"> 1. Flyer Attached Below* 2. Potential Partnership with Vidant to create Learning Lab to allow incumbent workers to “skill up” utilizing WIOA funds and tuition assistance from employers.

COMMUNITY COLLEGE LINKS:

Pitt Community College

www.pittcc.edu

Contact: 252-493-7200

Beaufort Community College:

www.beaufortccc.edu

Contact: 252-946-6194

Martin Community College:

www.martincc.edu

Contact: (252) 792-1521

Roanoke-Chowan Community College:

www.roanokechowan.edu

Contact: (252) 862-1200

With the appropriate training & education, you can start a high demand, good wage Healthcare career with any of the following employers.

EMPLOYERS:

--	--

NCWORKS CAREER CENTERS & CONTACTS:

PITT COUNTY:

NCWorks Career Center

3101 Bismarck Street,

Greenville, NC 27834

Phone: (252) 335-9067

CONTACT: **Neal Anderson**

BEAUFORT COUNTY:

NCWorks Career Center

1502 N Market Street

Washington, NC 27889

Phone: (252) 946-3116

CONTACT: **Darone Dancy**

MARTIN COUNTY:

NCWorks Career Center

407 East Blvd.

Williamston, NC 27892

Phone: (252) 792-7816

Contact: **Krista Woods**

BERTIE COUNTY:

NCWorks Career Center

128 East Granville Street

Windsor, NC 27893

Phone: (252) 794-5616

Contact: **Olivia Brown**

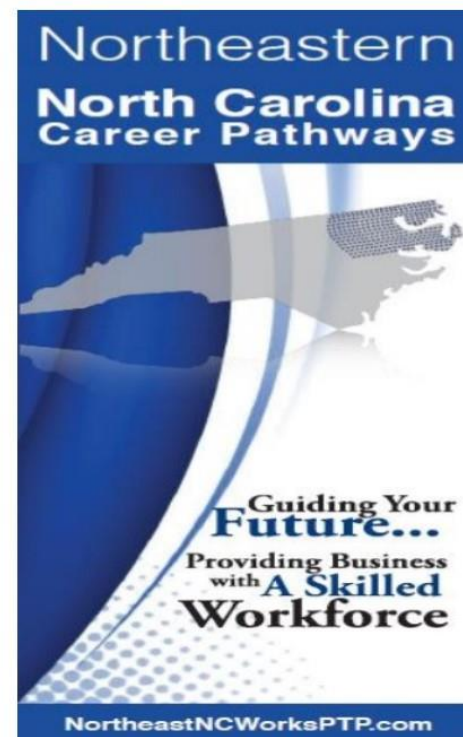
HERTFORD COUNTY:

NCWorks Career Center

109 Community College Road

Ahoskie, NC 27910

Phone: (252) 862-1257



**Your Career in
Healthcare
Begins Here!**



Healthcare Careers

Healthcare is becoming one of the largest and fastest growing industries in North Carolina and the United States. As the population ages there is an increasing need for good, qualified healthcare professionals. Advances in healthcare technology make the field even broader.

Gain the skills you need to get into a rewarding and financially stable career. The future is bright in the healthcare field. Getting started is easy. Just talk with one of our qualified, professional staff members. Let us help you map your pathway to success.

Are you a dislocated worker?

Are you under-employed due to a company layoff?

You could be eligible for paid training! Earn while you Learn!

Short-term & on-the-job paid training is available for those that qualify.

Talk to your NCWorks Career Center Staff in your County to Learn More!



Healthcare Training Programs:

Your NC Works Career Center can enroll or assist you in the following Healthcare Training Programs:

Pitt Community College:

- Nursing
- Phlebotomy
- Pharmacy Technician
- EKG Technician

Beaufort Community College:

- Nursing
- Phlebotomy
- Medical Assistant/Caregiver
- Pharmacy Technician
- Certified Nursing Assistant
- EKG Technician

Martin County Community College:

- Dialysis Technician
- Nursing
- Medical Billing & Coding
- Pharmacy Technician
- Phlebotomy

Roanoke-Chowan Community College:

- Dietary Management
- EKG Technician
- Home Health Aide
- Nursing
- Pharmacy Technician
- Phlebotomy

Healthcare Jobs:

- Health Technologist
- Nurse Practitioner
- Pharmacy Technician
- Phlebotomist

Criteria 6.0

**NC Northeast Health Care Pathways
Adult Learning Focus – Pitt County**

6.0 Northeastern NC Works Pathways Health Care Career Adult Learner Focus – Pitt County

6.1 Basic Skills Program, Continuing Education and the Curriculum Program Collaboration



PITT COMMUNITY COLLEGE

PCC Continuing Education Health Care Career Adult Pathway

CLUSTER: HEALTH SCIENCE



1. Must complete one of the following items in order to register for the Nursing Assistant I program
 - a. PCC Placement test for ConEd programs- must score at a 9th grade reading and math level
 - b. CRC- obtain CRC scores
 - c. Complete a college level Math and English course
 - d. Obtained a College Degree
 - e. TABE scores- must score at the 9th Grade level on reading & math (available to Basic Skills Plus students only)
2. Complete a BLS Health Care Provider CPR class (class must be American Heart Association approved)
3. Nursing Assistant I course (144 hours; 96 didactic hours and 48 clinical hours)
4. Student who successfully meets all requirements for the program are eligible to take the NNAAP/Credentia test for state certification (credential).

Next Steps- Transition to Curriculum once Nursing Assistant I course is complete (Curriculum programs that require the NA I Certification):

- Medical Sonography
- Echocardiography
- Nuclear Medicine

Next Steps- Students can continue to further their education with the following programs:

- Nursing Assistant II course (160 hours, 80 didactic hours & 80 Clinical hours)
 - Students can only take NA II once they pass the state certification for NAI and complete immunization requirements.
 - Student who complete all 160 hours and course requirements, will pay \$24 to NCBON for NA II credentials
- Medication Aide course (24 hours)
 - Students who successfully pass the course are eligible to sit for Medication exam for stackable credential.
- Phlebotomy National Certification course (232 hours; 192 didactic hours, 40 clinical hours)
 - Students who successfully all requirements and 232 hours of the course are eligible to sit for the American Society of Phlebotomy Technicians (ASPT) exam for national certification.
- 12 Lead EKG Monitor Technician course (82 hours)
 - Students who meet all requirements for the program have the option to sit for the certification in EKG via ASPT or NHA; the certification is not required to work in North Carolina.
- Pharmacy Technician Training Course (90 hours)
 - Students who meet all requirements and complete the 90 hours of the course are eligible to sit for the Pharmacy Technician Certification Board (PTCB) exam for pharmacy certification.

CREDENTIALS/CERTIFICATIONS	CAREER DEVELOPMENT (HRD COURSES)
BLS Provider CPR/AED Career Readiness Credential (CRC) NNAAP/Credentia	Career Readiness Certification (CRC) Implementing the Working Smart - Soft Skills for the Workplace (Curriculum)- a. Working Smart: Soft Skills for Workplace Success is a five-module, 16-lesson soft-skills curriculum. The five modules are: Self Awareness, Self-Management, Work Ethics, Communication Skills, and Problem-Solving Skills. Individuals who complete the training will receive a program certification.
WORK-BASED LEARNING	Project Tool Up- exposes participants to the higher education system, as well as gives them skills and certifications needed to work in today's manufacturing centers
Clinical rotations in the NA I, NA II program and Phlebotomy program	HRD Course Offerings include:
Classroom Speakers (industry partners visit the NA I and NA II program to speak on employer expectations and job openings).	Overcoming Job Seeking Barriers & Blunders Job Interview Skills Communication Skills Employer Expectations Professionals in Transition Secrets of Landing a Job Taking Action: Create a Dynamic Resume Overcoming Obstacles
	Partnership with DSS Work First Program- offering HRD training to participants
	Partnership with Pitt County School System- offering CRC testing for Non-CTE senior population
	Partnership with the WIOA Youth program- offering HRD training to clients and assist with High school Equivalency testing
	Partnership with NCWorks- provide HRD training for clients

HEALTH CARE PROGRAMS

Fall 2017



BLS (Basic Life Support) Provider Course

Various course offerings - Call for dates

8:30am - 3:30pm
6 Hours
\$80

BLS Provider is a basic life support course including relief of foreign body airway obstruction, 1 and 2 rescuers CPR in infant, child, and adult, and use of automated external defibrillators in adult and child. Book (AHA-Health Care Providers) & Face Mask approximately \$32.64 (+tax) at PCC bookstore; both are required.

Nursing Assistant I

Various course offerings - Call for dates and times

144 Hours
\$213

The Nursing Assistant I course prepares graduates to provide personal care and perform basic nursing skills. It includes classroom, lab, and clinical learning experiences. Students who desire to enroll in this class must meet admission requirements. At the end of the course, the successful graduate will receive a certificate of course completion and assistance with application process for the NACES/Pearson Vue NC State Competency Examination (\$101). Book is approximately \$45.

Nursing Assistant II

Various course offerings - Call for dates and times

160 Hours
\$215

The Nursing Assistant II course prepares graduates to perform advanced nursing procedures. It includes 80 hours classroom/lab and 80 hours clinical learning experiences. Students desiring to enroll in this class must meet admission requirements, be CPR certified through an American Heart Association approved CPR course, and have a current listing as an NA I with the Division of Health Services Regulations in Raleigh. Upon successful completion, the NA II graduate will be listed with the NC Board of Nursing with employment opportunities at the hospital. At the end of the course the successful graduate will submit a Board of Nursing Test Fee of \$24. **Prerequisite:** Nursing Assistant I. Book is approximately \$135.

Nursing Assistant I Refresher

Wednesdays & Thursdays | Sept. 6 - Oct. 5

1:00pm - 5:00pm
40 Hours
\$135

This course offers a Refresher on Nursing Assistant I materials and skills. You are eligible if your NAI has expired (by no more than 5 years of expiration) or if you are certified in another state and desire certification in NC. A photo ID is needed and verification of Social Security Card. Both photo ID and SS card must match for NACES Testing. **Prerequisite:** Must be previously listed as an NA I. Book is approximately \$60. NACES Testing is \$101.

Nursing Assistant II Competency Testing

This course is designed to provide the student an opportunity to demonstrate competency skills required by the NC Board of Nursing to practice as a NA II. Students who have been off the NA II registry 24 months or less are eligible to take this test. The student must be active on the NA I registry and have been listed on the NA II registry. Students successfully demonstrating all required skills will be referred to the Board of Nursing for re-listing on the NA II registry. Contact Rosemary Wallace at testing (252) 493-7733 or by email rwallace@email.pittcc.edu to schedule.

Sidette Boyce Brown | 252-493-7233 | sboyce@email.pittcc.edu
Deneen Lawrence | 252-493-7225 | dlawrence@email.pittcc.edu
3107 S. Memorial Dr. | Greenville, NC | 27834



HEALTH CARE PROGRAMS

Fall 2017



Medication Aide

Wednesdays & Thursdays | Oct. 4 - Oct. 19

1:00pm - 5:00pm
24 Hours
\$80

This course is designed to meet the training requirements for becoming qualified to be a Medication Aide. The course will cover the six rights of medication administration for non-licensed personnel. Topics will include medication administration via the oral, topical and instillation routes, medical asepsis, hand hygiene, terminology, and legal implications. Upon completion, students should be able to take the competency exam and demonstrate skills necessary to qualify for listing on the North Carolina Medication Aide Registry. **Must be a Nursing Assistant I to work as a Medication Aide in a Skilled Nursing Facility.** Book is approximately \$15.

Pharmacy Technician Training

Mondays & Wednesdays | Aug. 21 - Dec. 6

6:30pm - 9:30pm
90 Hours
\$190

This course provides you with the basic knowledge and skills required to work as a technician in a pharmacy. This course includes compounding, calculations, drug classifications, and review for certification. At the end of the course you will be prepared to sit for the PTCB certification exam. Pharmacy technicians who are certified are being employed in traditional as well as innovative practice models across the nation. Employing CPhTs allows pharmacies to expand services and enhance patient care, and gives pharmacists more time to spend with patients, providing drug information, answering questions, and promoting compliance with medication regimens. Certification provides the public and pharmacists with greater confidence in their pharmacies. Book is approximately \$175.

12 Lead EKG - Monitor Technician

Tuesdays & Thursdays | Sept. 5 - Nov. 14

8:30am - 12:30pm
82 Hours
\$205

This program focuses on Acute and Critical Care Heart monitoring and reflects the latest knowledge in the Cardiac field. It begins by covering all the basics of arrhythmia interpretation and covers cardiac anatomy and physiology and clinical interpretation of the electrocardiography and pacemaker rhythms. This program may be taken by a student with either no EKG training or by a student who previously had basic EKG training interpretation. Employment is usually at the hospital level, in an Acute or Critical Care area of the hospital setting. Book is approximately \$65.

Phlebotomy (National Certification)

Mondays, Tuesdays & Thursdays | Jan. 16, 2018 - May 14, 2018

6:00pm - 10:00pm
232 Hours
\$215

Phlebotomy training prepares the student to draw blood specimens from patients for the purpose of testing and analyzing blood. A phlebotomist's job includes maintenance of equipment used in obtaining blood specimen; the use of appropriate communication skills when working with patients; the selection of venipuncture sites; the care of blood specimen; and the entry of the testing process into the computer, as well as clerical duties associated with record keeping of the blood tests. The course consists of theory and clinical experiences in performing blood collections. The student must be a high school graduate or have a high school equivalency, be CPR certified or scheduled to take Healthcare Provider CPR, and meet immunization requirements. One full week of clinical 8am-5pm is required for each student. Book is approximately \$70.

Sidette Boyce Brown | 252-493-7233 | sboyce@email.pittcc.edu
Deneen Lawrence | 252-493-7225 | dlawrence@email.pittcc.edu
3107 S. Memorial Dr. | Greenville, NC | 27834




PITT COMMUNITY COLLEGE
Basic Skills Plus Health Care Career Adult Pathway - Medical Assisting
CLUSTER: HEALTH SCIENCE


(A set of instructions is included with this template which defines terms and indicates how the form is to be filled out.)

1. Name of College: Pitt Community College				2. Name of proposed BASIC SKILLS PLUS Career Pathway: Medical Assisting		
3. Source and data used to identify local labor market demand		3a. Source Used: Region Q Workforce Development Board and Employment Security Commission				
		3b. Data supporting pathway labor market demand: Healthcare/Social Assistance provides approximately 16,543 jobs in the Pitt County area.				
4. Name and type of THIS CREDENTIAL: AAS-Medical Assisting				5. Pre-test(s) used: Test of Adult Basic Education (TABE)		
6. Scale score(s) required for entrance into BS+ career pathway: Reading – 567+ Math – 566+		7. Entrance or Post-test scale score(s) required for concurrent enrollment in first curriculum course (if different): Same as #6			8. How was this entrance score determined? The entrance score is based on the requirements for Basic Skills Plus. Students entering the program must be at the Adult Secondary Low and High Educational Functioning Levels. Scoring in this range indicates that students possess a level of math and reading skills that are necessary to be successful in the Medical Assisting program.	
9. Courses required: List course names/ numbers in the order in which they are taken by semester; Note course prerequisites						
Semester (add as needed)	Enrollment type: Open, Managed	Basic Skills Course(s)	Career/technical courses ;	HRD courses	Team-taught? (Y or N)	For each course, list which acceleration strategies are used in instruction
I	Managed Managed Managed Managed Managed	GED AHSD Prep for Success	ACA 111 CIS 110 BIO 094 DRE DMA	Career Assist	N N N N N	Basic Skills Plus students may be enrolled in GED, AHSD, ACA 111, CIS 110, BIO 094, DMA, and DRE. Students will be scheduled for the appropriate courses following the results of their college placement test. Students will receive a significant amount of academic and personal support through the Prep for Success course along with CRC preparation. The coordinator responsible for the Basic Skills Plus program will also provide support and counseling to assist students in accelerating. When the number of students in the Medical Assisting pathway is sufficient, separate classes that include only students in the pathway or other Basic Skills Plus pathways will be created.
II						
III						
IV						

10a. All Credentials Earned in pathway: (list) 1. GED or AHSD 2. Career Assist (HRD) 3. Career Readiness Certification (CRC) 4. Medical Assisting Clinical Certificate 5. AAS – Medical Assisting	10b. Semesters required for each credential: 1. Varies 2. 1 3. 1 4. 1-2 5. 4-5	10. Credits earned: Approximately 10 curriculum credits can be earned in this pathway.
11. When does orientation take place? Orientation takes place at the beginning of each semester prior to the start of the required Basic Skills Plus courses.	12. When does career awareness take place? Career awareness takes place on a weekly basis in the Prep for Success class. This course allows students to explore careers by utilizing a variety of career inventories, exploration, and contextualized instruction. In addition, career awareness is also a part of the Career Assist course.	
13. Support services provided to Basic Skills Plus students at entry through credentials: <ul style="list-style-type: none">• Career and academic mentoring is provided by the Basic Skills Plus Coordinator and Prep for Success Instructor. In addition, the students’ GED or AHSD instructor will provide necessary career and academic mentoring.• Peer mentoring is also present as students participating in the program will have the opportunity to meet with each other during the Prep for Success course.• The Basic Skills Plus Coordinator meets with students on a weekly basis for additional support. Students discuss their progress in their pathway programs as well as in Basic Skills. They also discuss personal and educational barriers that they are experiencing.• The Basic Skills Plus Coordinator regularly makes follow-up telephone calls to inquire about student progress. The follow-up includes calls to the students and instructors of pathway courses.• Following their completion of Basic Skills Plus, students are referred to the Counseling Center at Pitt Community College for academic and personal counseling. The Basic Skills Plus Coordinator also remains available to support students following their completion of Basic Skills Plus.• By the time students complete their pathway, they have established a relationship with the Medical Assisting Chair and instructors. These individuals can assist students in moving forward in this career pathway.• Students are referred to financial aid for financial support following their completion of Basic Skills Plus.• Eligible Students are referred to TRIO Student Support Services for additional support throughout the entire pathway. This support includes assistance with completing financial aid forms, admission applications, career exploration, and tutoring.• Students are also referred to Pitt Community College Tutorial Services for assistance while they are enrolled in this pathway.		
14. Instructional model to be used with this pathway: The instructional model that will be used will reflect a learning community. Students enrolled in this pathway will be required to attend their basic skills class, Prep for Success class, and pathway courses. The basic skills and Prep for Success instructors will be familiar with the content of the pathway courses so that they are able to contextualize instruction for the students. This will ultimately contribute to the students’ success in the pathway.		



PITT COMMUNITY COLLEGE

Basic Skills Plus Health Care Career Adult Pathway – Emergency Medical Science

CLUSTER: HEALTH SCIENCE



(A set of instructions is included with this template which defines terms and indicates how the form is to be filled out.)

13. Name of College: Pitt Community College				14. Name of proposed BASIC SKILLS PLUS Career Pathway: EMS		
15. Source and data used to identify local labor market demand		3a. Source Used: Region Q Workforce Development Board and Employment Security Commission				
		3b. Data supporting pathway labor market demand: Healthcare/Social Assistance provides approximately 16,543 jobs in the area. As a result, a number healthcare facilities within the region can provide substantial employment to those completing the EMS program.				
16. Name and type of THIS CREDENTIAL Emergency Medical Technician, Basic				17. Pre-test(s) used: Test of Adult Basic Education (TABE)		
18. Scale score(s) required for entrance into BS+ career pathway: Reading – 567+ Math – 566+		19. Entrance or Post-test scale score(s) required for concurrent enrollment in first curriculum course (if different): Same as #6		20. How was this entrance score determined? The entrance score is based on the requirements for Basic Skills Plus. Students entering the program must be at the Adult Secondary Low and High Educational Functioning Levels. Scoring in this range indicates that students possess a level of math and reading skills that are necessary to be successful in the Pharmacy Technician program.		
21. Courses required: List course names/ numbers in the order in which they are taken by semester; Note course prerequisites						
Semester (add as needed)	Enrollment type: Open, Managed	Basic Skills Course(s)	Career/technical courses ;	HRD courses	Team-taught? (Y or N)	For each course, list which acceleration strategies are used in instruction
I	Managed Managed Managed Managed	GED AHSD Prep for Success ASE	EMT Basics Medical Responder Initial	Career Assist	N N N N	Basic Skills Plus students may be enrolled in GED, AHSD, EMT Basics, and MR I. Students will be scheduled for the appropriate courses following the results of their college placement test. Students will receive a significant amount of academic and personal support through the Prep for Success course along with CRC preparation. The coordinator responsible for the Basic Skills Plus program will also provide support and counseling to assist students in accelerating. When the number of students in the EMT, MR pathway is sufficient, separate classes that include only students in the pathway or other Basic Skills Plus pathways will be created.
II						
III						
IV						

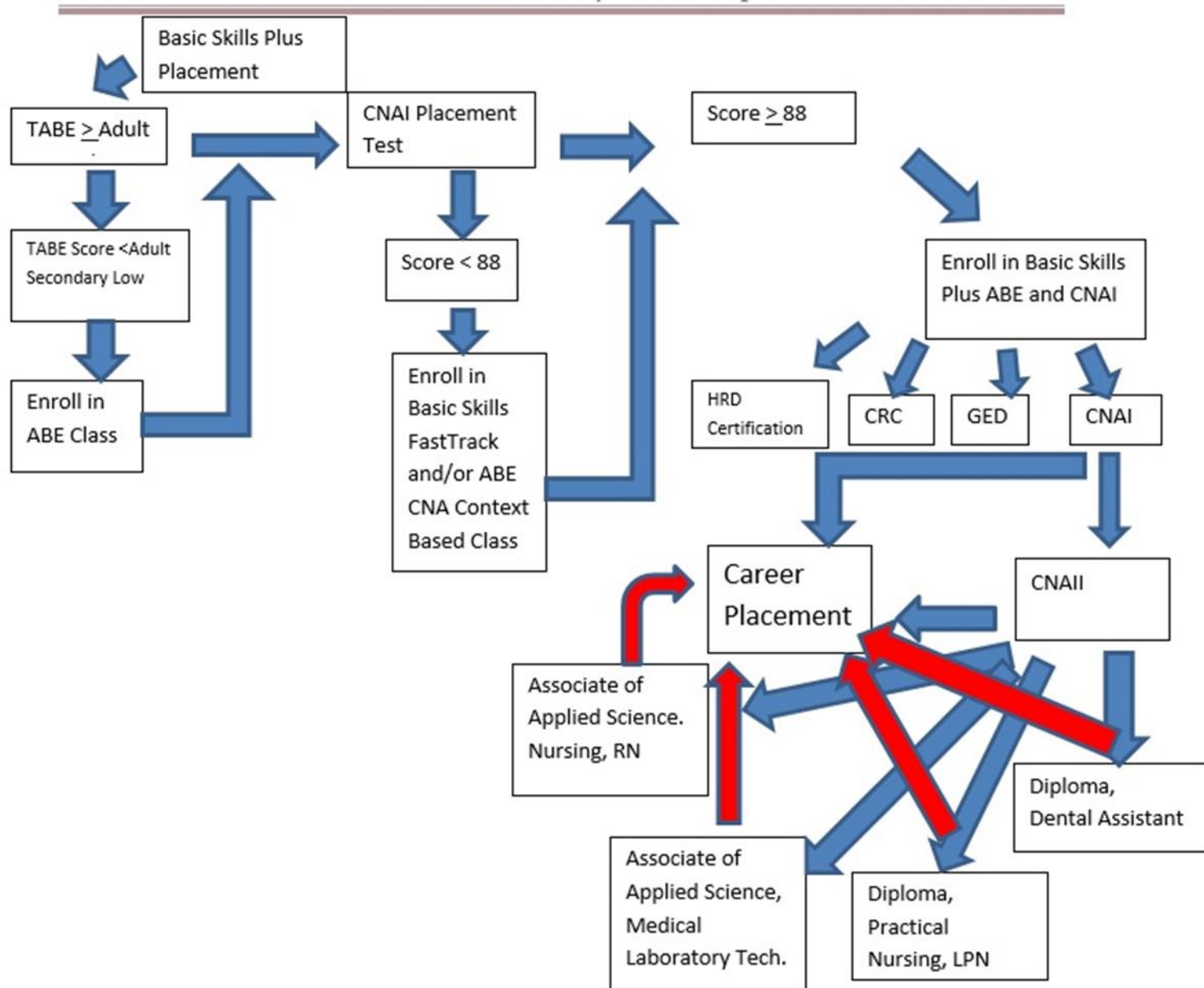
10a. All Credentials Earned in pathway: (list) 6. GED or AHSD 7. Career Assist (HRD) 8. Career Readiness Certification (CRC) 9. EMT Basic 10. Med. Responder Initial	10b. Semesters required for each credential: 6. Varies 7. 1 8. 1 9. 1 10. 1	22. Credits earned: No curriculum credits are earned in this pathway because it is an Occupational Extension program.
23. When does orientation take place? Orientation takes place at the beginning of each semester prior to the start of the required Basic Skills Plus courses.	24. When does career awareness take place? Career awareness takes place on a weekly basis in the Prep for Success class and is incorporated into all ABE/ASE courses. This course allows students to explore careers by utilizing a variety of career inventories, exploration, and contextualized instruction. In addition, career awareness is also a part of the Career Assist course.	
13. Support services provided to Basic Skills Plus students at entry through credentials: <ul style="list-style-type: none">• Career and academic mentoring is provided by the Basic Skills Plus Coordinator and Prep for Success Instructor. In addition, the students' GED or AHSD instructor will provide necessary career and academic mentoring.• Peer mentoring is also present as students participating in the program will have the opportunity to meet with each other during the Prep for Success course.• The Basic Skills Plus Coordinator meets with students on a weekly basis for additional support. Students discuss their progress in their pathway programs as well as in Basic Skills. They also discuss personal and educational barriers that they are experiencing.• The Basic Skills Plus Coordinator regularly makes follow-up telephone calls to inquire about student progress. The follow-up includes calls to the students and instructors of pathway courses.• Following their completion of Basic Skills Plus, students are referred to the Counseling Center at Pitt Community College for academic and personal counseling. The Basic Skills Plus Coordinator also remains available to support students following their completion of Basic Skills Plus.• By the time students complete their pathway, they have established a relationship with the Director of HealthCare programs and instructors. These individuals can assist students in moving forward in this career pathway.• Students are referred to financial aid for financial support following their completion of Basic Skills Plus if they would like to transition into a curriculum program.• Eligible Students are referred to TRIO Student Support Services for additional support throughout the entire pathway. This support includes assistance with completing financial aid forms, admission applications, career exploration, and tutoring.• Students are also referred to Pitt Community College Tutorial Services for assistance while they are enrolled in this pathway.		
14. Instructional model to be used with this pathway: The instructional model that will be used will reflect a learning community. Students enrolled in this pathway will be required to attend their basic skills class, Prep for Success class, and pathway courses. The basic skills and Prep for Success instructors will be familiar with the content of the pathway courses so that they are able to contextualize instruction for the students. This will ultimately contribute to the students' success in the pathway.		


PITT COMMUNITY COLLEGE
Basic Skills Plus Health Care Career Adult Pathway - Pharmacy Technician
CLUSTER: HEALTH SCIENCE


(A set of instructions is included with this template which defines terms and indicates how the form is to be filled out.)

25. Name of College: Pitt Community College			26. Name of proposed BASIC SKILLS PLUS Career Pathway: Pharmacy Technician			
27. Source and data used to identify local labor market demand		3a. Source Used: Region Q Workforce Development Board and Employment Security Commission				
		3b. Data supporting pathway labor market demand: Healthcare/Social Assistance provides approximately 16,543 jobs in the area. As a result, a number healthcare facilities and pharmacy within the region can provide substantial employment to those completing the Pharmacy Technician program.				
28. Name and type of THIS CREDENTIAL: Pharmacy Technician I and Pharmacy Technician II			29. Pre-test(s) used: Test of Adult Basic Education (TABE)			
30. Scale score(s) required for entrance into BS+ career pathway: Reading – 567+ Math – 566+		31. Entrance or Post-test scale score(s) required for concurrent enrollment in first curriculum course (if different): Same as #6		32. How was this entrance score determined? The entrance score is based on the requirements for Basic Skills Plus. Students entering the program must be at the Adult Secondary Low and High Educational Functioning Levels. Scoring in this range indicates that students possess a level of math and reading skills that are necessary to be successful in the Pharmacy Technician program.		
33. Courses required: List course names/ numbers in the order in which they are taken by semester; Note course prerequisites						
Semester (add as needed)	Enrollment type: Open, Managed	Basic Skills Course (s)	Career/technical courses ;	HRD cours es	Team-taught? (Y or N)	For each course, list which acceleration strategies are used in instruction
I	Managed Managed Managed Managed Managed	GED AHSD Prep for Success	Pharmacy Technician I Pharmacy Technician II	Career Assist	N N N N N	Basic Skills Plus students may be enrolled in GED, AHSD, Pharmacy Technician I, and Pharmacy Technician II. Students will be scheduled for the appropriate courses following the results of their college placement test. Students will receive a significant amount of academic and personal support through the Prep for Success course along with CRC preparation. The coordinator responsible for the Basic Skills Plus program will also provide support and counseling to assist students in accelerating. When the number of students in the Pharmacy Technician pathway is sufficient, separate classes that include only students in the pathway or other Basic Skills Plus pathways will be created.
II						
III						

Basic Skills Plus/CNAI Map



6.0 Northeastern NC Works Pathways Health Care Career Adult Learner Focus – Pitt County

6.2 Collaboration between the community college with the Workforce Development Board/NCWorks Career Centers

CAREER PATHWAYS

WHY USE THIS?

“Career Pathways” shouldn’t be considered an added component of a career advisor’s work with clients—it should be the basis for all work that a career advisor does with a client.

HOW DO I USE THIS GUIDE?

Northeast NC has two “Certified NCWorks Career Pathways” in: Advanced Manufacturing and Health Sciences. This booklet gives career advisors a template to guide them through their implementation of a “pathway” with a client.

A Toolkit for Local Implementation for Career Advisors in Northeast NC

WHO IS THIS FOR?

All career advisors and their clientele—WIOA participants can align this with their IEP’s.

WHAT COMES NEXT?

There are certainly occupations that clients desire outside of these two industry sectors and there may be regionally approved pathways in the future that focus on those. Regardless, the materials herein provide career advisors with a framework that they can use for any occupational pathway planning.

Table of Contents

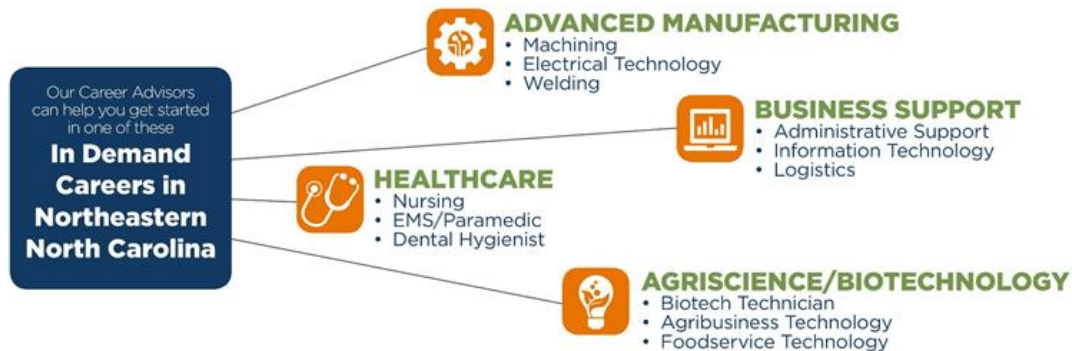
1. History/Framework Used for Regional Career Pathways Development
2. Career Cluster Matrices for Grades 8-12 for Advanced Manufacturing
(use with in-school youth)
3. Career Cluster Matrices for Grades 8-12 for Health Sciences
(use with in-school youth)
4. Contact Information for K-12 Career & Technical Education Directors
(use with in-school youth)
5. Template for Building Pathways with Clients
6. Staffing Pattern/Occupation Listing for Advanced Manufacturing
7. Programs of Study for Advanced Manufacturing
8. Staffing Pattern/Occupation Listing for Health Sciences
9. Programs of Study for Health Sciences
10. Example of COA Pathway for Health Sciences
11. Examples of Marketing Materials

CAREER PATHWAYS



Do more than get a job.

Find your pathway to a **GREAT CAREER!**



Get started for free at...

www.ncworks.gov

Or stop by your nearest NCWorks Career Center.



JOIN YER NORTHEASTERN NC CREW FOR THE 4TH ANNUAL CAREER GUIDANCE RETREAT

NAVIGATING CAREER SUCCESS

Who?

Local Education Agencies: Career & Technical Education Directors and/or Career Development Coordinators
RSVP here: <https://tinyurl.com/yadhgb84>

When?

Wednesday,
October 18th

Career Centers & Workforce Development Board Career Advisors
RSVP here: <https://tinyurl.com/yc9f9mmm>

Thursday,
October 19th

Community College Administrators and/or Instructors for HRD, Basic Skills & Success Navigators/Coaches
RSVP here: <https://tinyurl.com/y9ucpg7c>

Friday,
October 20th

Where?

Chowan County Cooperative Extension Bldg
730 N. Granville St, Ste A | Edenton

Questions? Contact Emily Nicholson (Northeastern WDB)
enicholson@accog.org | 424-5753 x233

All Occuring 9:00AM-12:30PM

Criteria 7.0

NC Northeast Health Care Pathways Evaluation – Pitt County

The LEAs, Community College and Workforce Development Board agree to track and turn in the health care metrics data sets (first collected in 2013-14) as prescribed by the regional pathway partnership

Check indicates the agreement to provide the prescribed data:

☒ LEAs/Health Sciences Academy ☒ Community College ☒ WDB