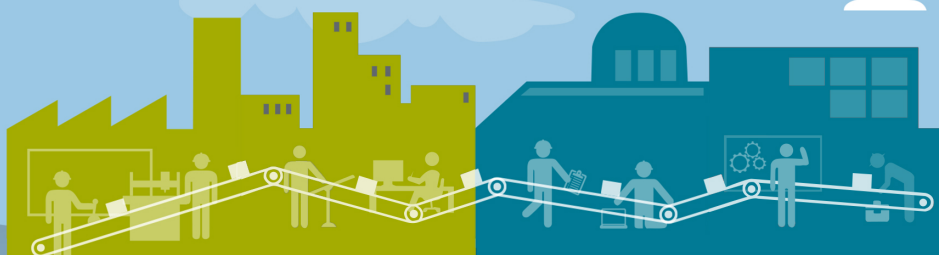


ADVANCED MANUFACTURING CAREER PATHS



ENGINEERING & TECHNOLOGY

PRODUCTION, MAINTENANCE, INSTALLATION AND REPAIR

**HIGH SCHOOL
OR GED**

NO HIGH-GROWTH
JOBS AT THE
HIGH SCHOOL / GED LEVEL
IN THIS PATHWAY

TEAM ASSEMBLERS,
HELPERS--ELECTRICIANS, MAINTENANCE
AND REPAIR WORKERS, INSTALLATION,
MAINTENANCE, AND REPAIR WORKERS

ANNUAL
OPENINGS: 912

\$17.85
HOURLY RATE

**FULL
CERTIFICATE
OR DIPLOMA
(1-2 YRS)**

PRODUCT TECHNICIAN

FIRST-LINE SUPERVISORS OF
PRODUCTION AND OPERATING WORKERS

ANNUAL
OPENINGS: 65

\$12.77
HOURLY RATE

ANNUAL
OPENINGS: 165

\$30.10
HOURLY RATE

**ASSOCIATE
DEGREE (2 YRS)**

INDUSTRIAL ENGINEERING TECHNICIANS,
MECHANICAL ENGINEERING TECHNICIANS

ELECTRICAL AND ELECTRONIC EQUIPMENT
ASSEMBLERS, MACHINISTS, WELDERS,
CUTTERS, SOLDERERS, AND BRAZERS,
SHEET METAL WORKERS, PLUMBERS,
PIPEFITTERS / STEAMFITTERS

ANNUAL
OPENINGS: 50

\$24.30
HOURLY RATE

ANNUAL
OPENINGS: 268

\$18.63
HOURLY RATE

BA/BS (4 YRS)

MECHANICAL ENGINEERS,
INDUSTRIAL ENGINEERS,
ELECTRICAL ENGINEERS

PLANT MANAGER,
INDUSTRIAL PRODUCTION MANAGER

ANNUAL
OPENINGS: 97

\$39.51
HOURLY RATE

ANNUAL
OPENINGS: 113

\$54.86
HOURLY RATE

**MASTER'S/
DOCTORAL
PROFESSIONAL
DEGREE**

MECHANICAL ENGINEERS,
INDUSTRIAL ENGINEERS,
ELECTRICAL ENGINEERS

NO HIGH-GROWTH
JOBS AT THE
MASTER'S / DOCTORAL
LEVEL IN THIS PATHWAY

ANNUAL
OPENINGS: 97

\$39.51
HOURLY RATE

EMSI 2018 1st quarter data and ncworks.gov



<https://www.facebook.com/nencpathways/>



@nencpathways



nenccareerpathways